

2016 winter acoustic-trawl survey of the Bogoslof Island area

Denise McKelvey & MACE Program
Alaska Fisheries Science Center

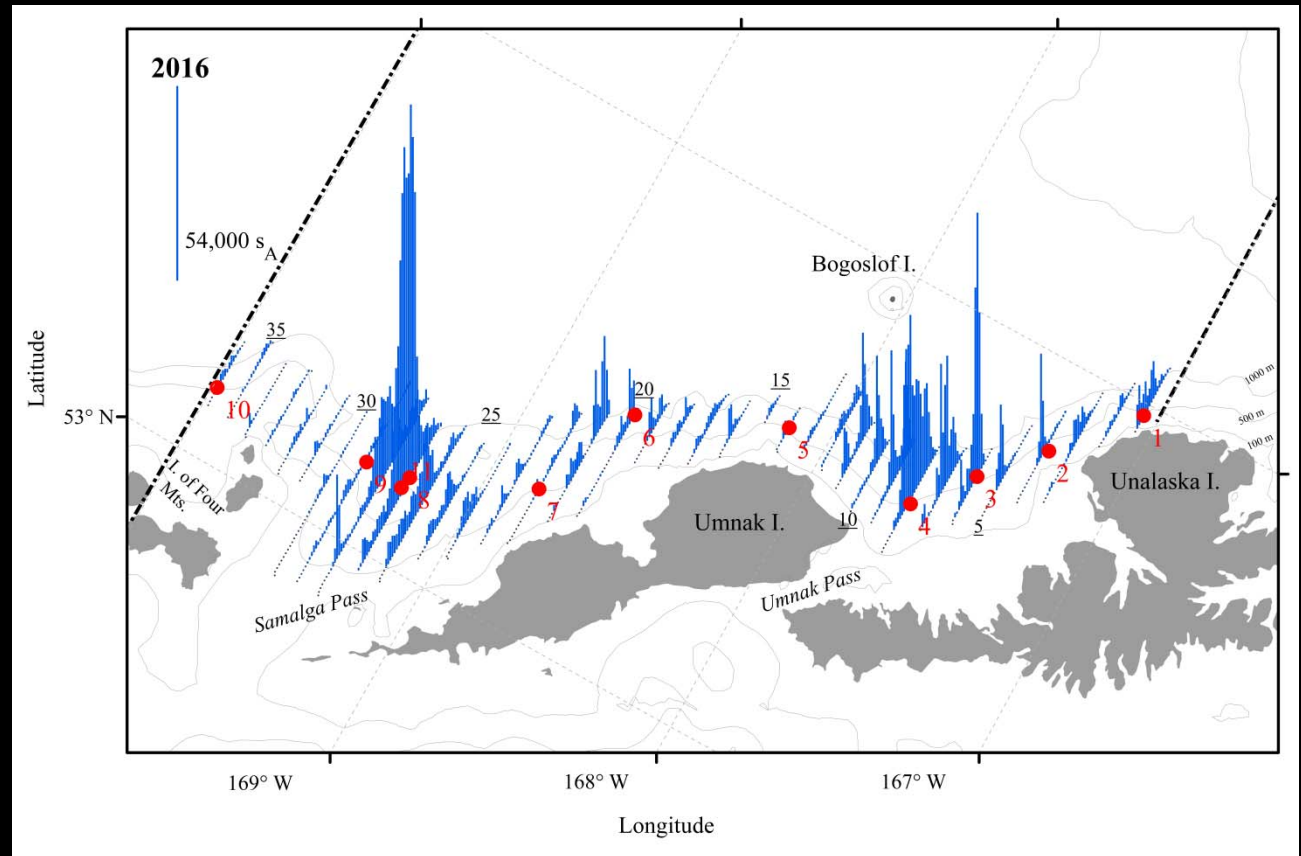


4–8 March 2016

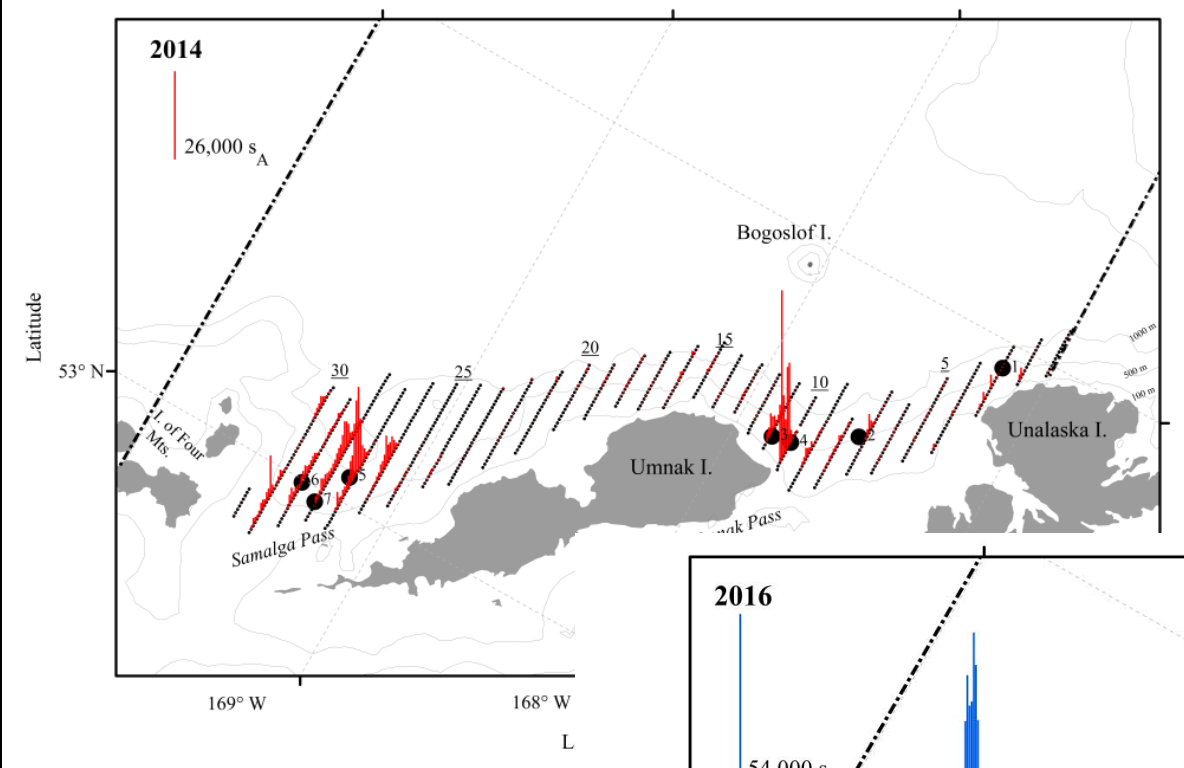


NOAA ship *Oscar Dyson*

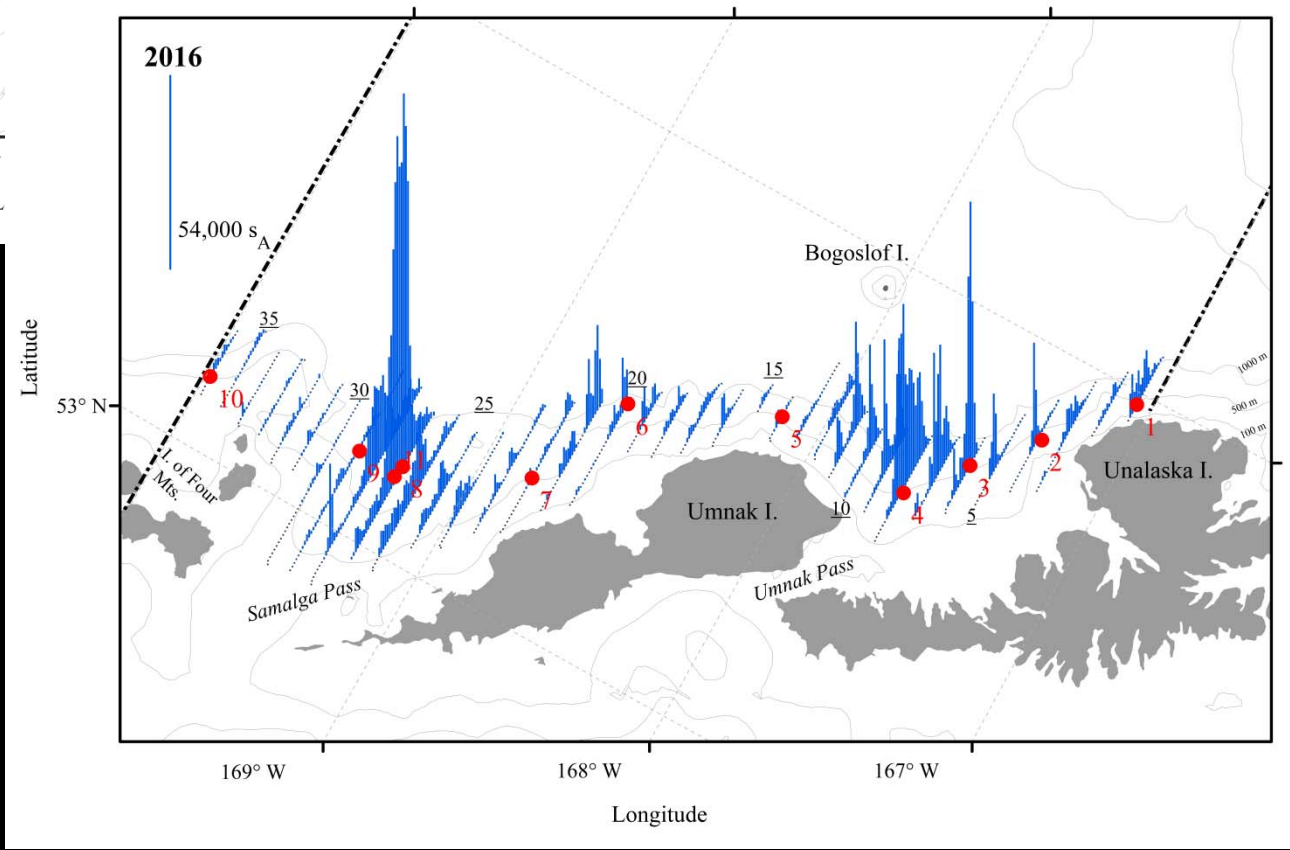
Bogoslof Island area AT survey March 2016



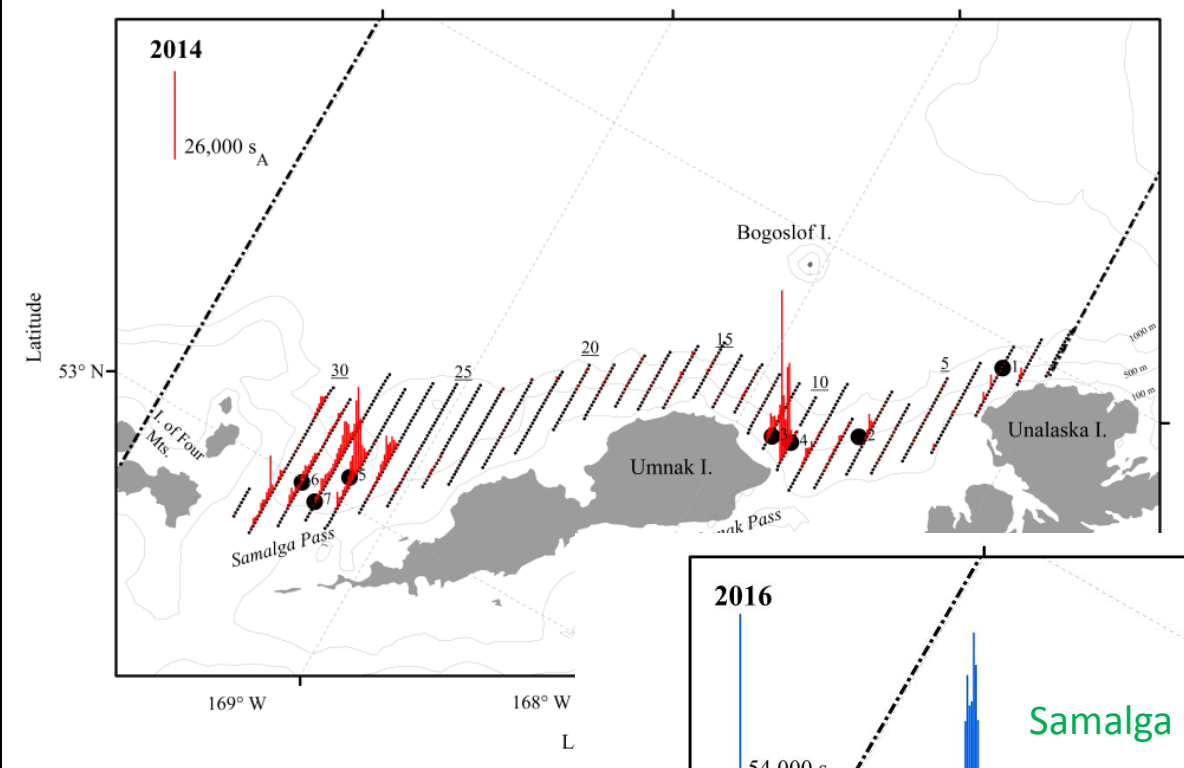
2014



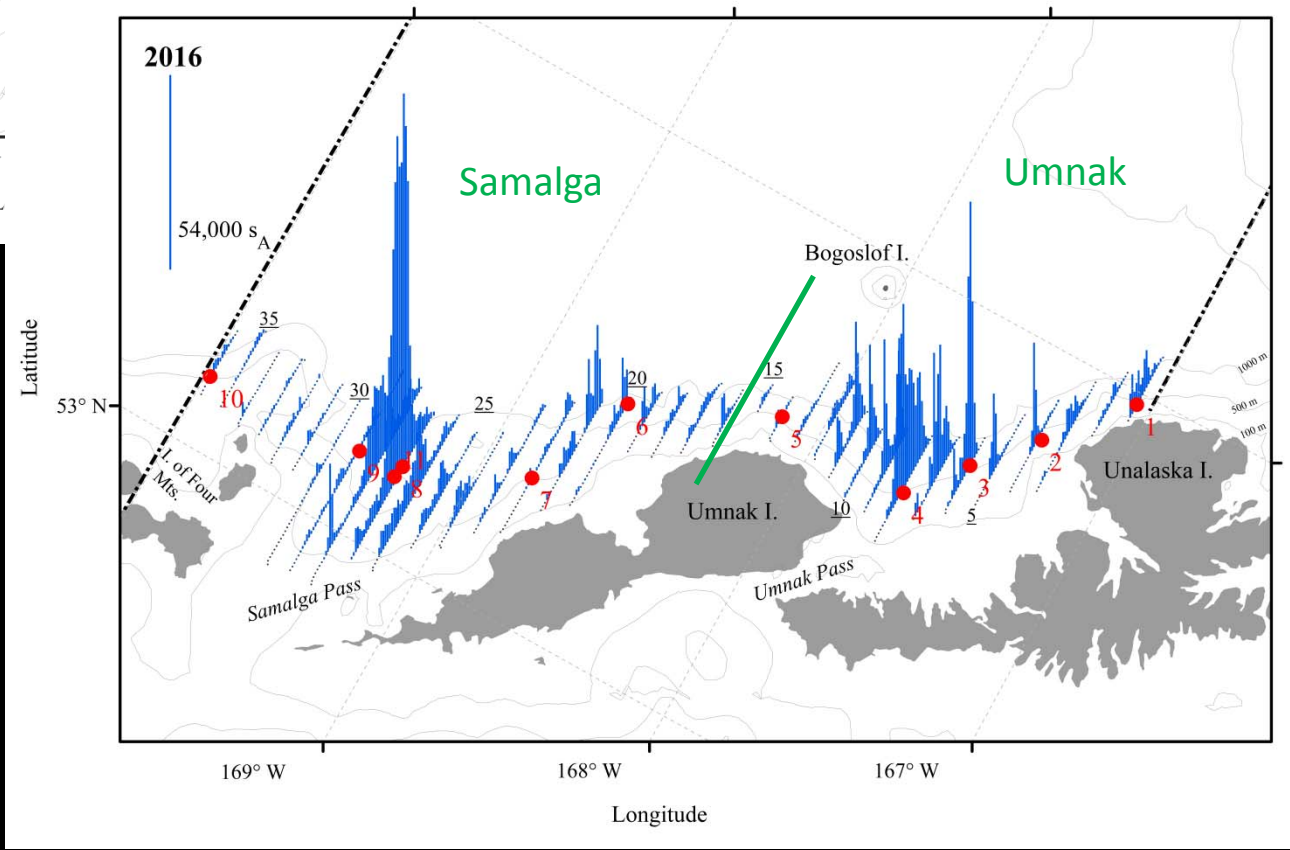
2016



2014



2016



Catch by weight

10 AWT

Pollock (98%)

Lanternfish

Jellyfish

1 PNE (midwater sample)

Pollock (97%)

Jellyfish

Catch by weight

10 AWT

Pollock (98%)

Lanternfish

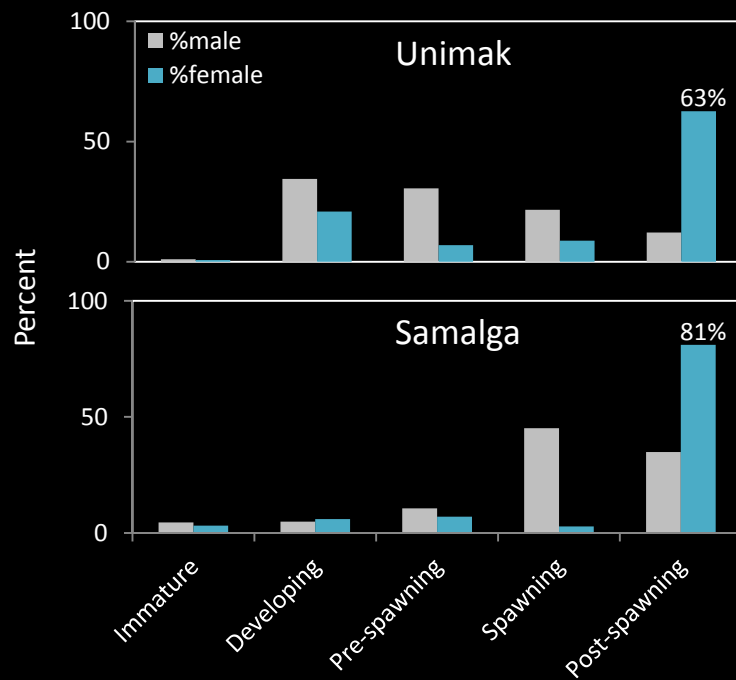
Jellyfish

1 PNE (midwater sample)

Pollock (97%)

Jellyfish

Pollock maturities



Catch by weight

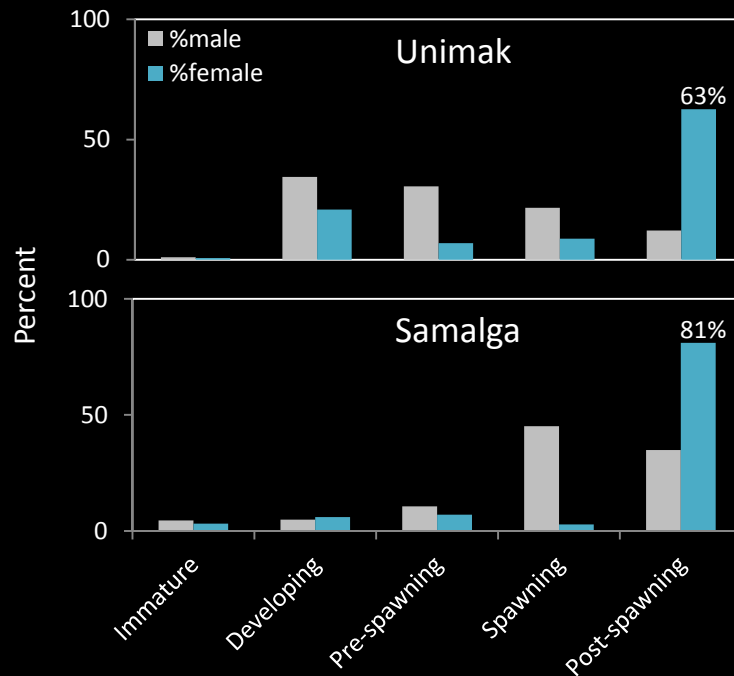
10 AWT

Pollock (98%)
Lanternfish
Jellyfish

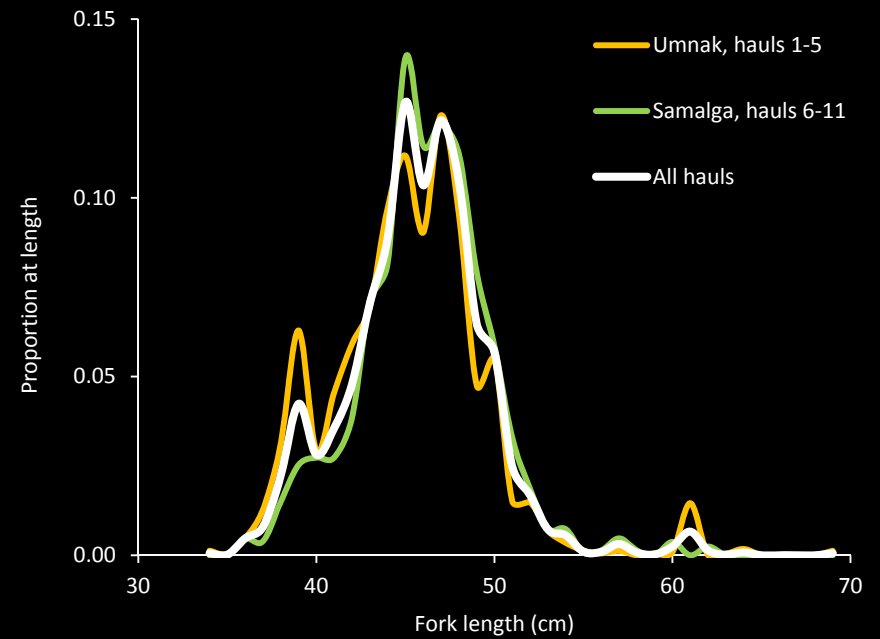
1 PNE (midwater sample)

Pollock (97%)
Jellyfish

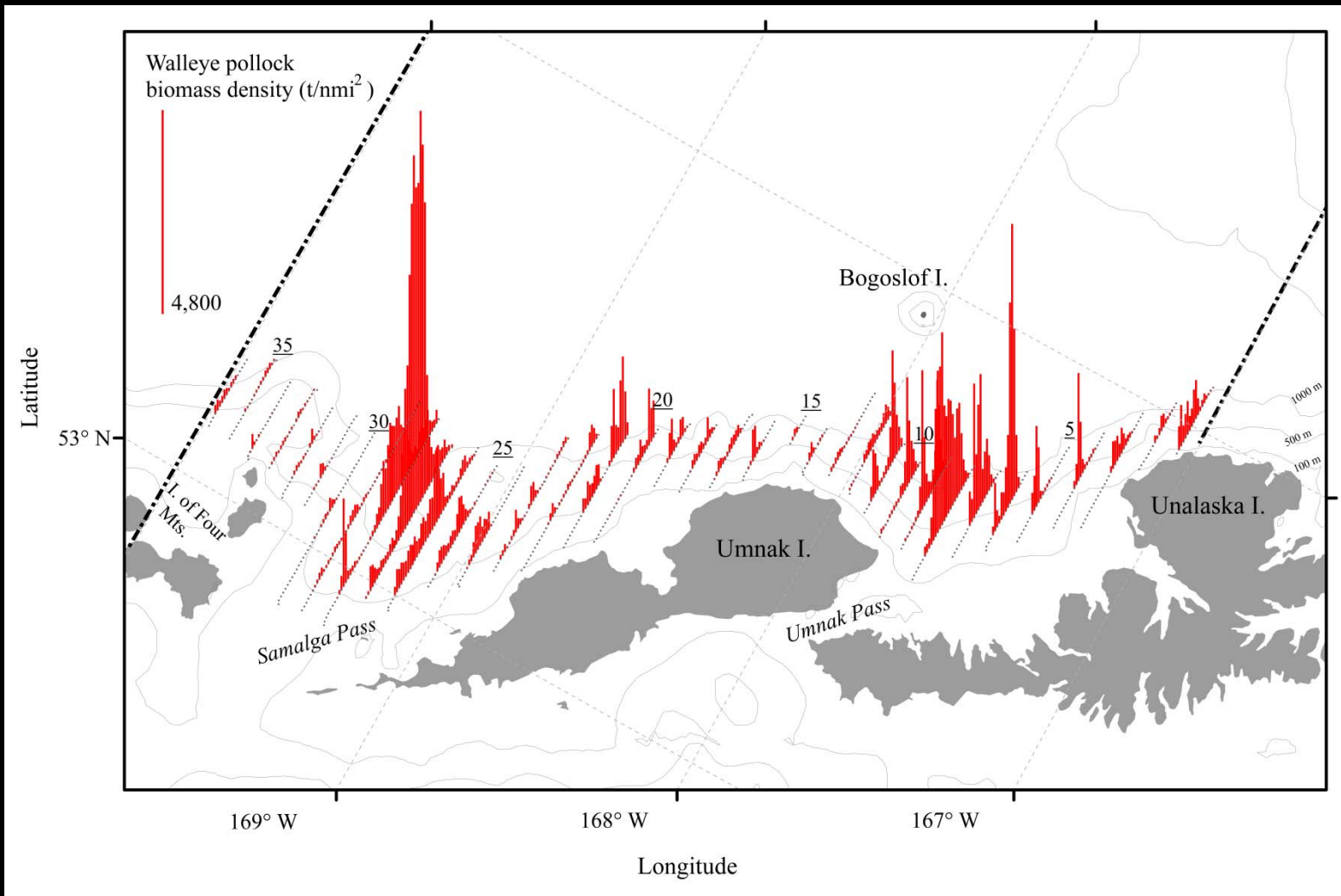
Pollock maturities



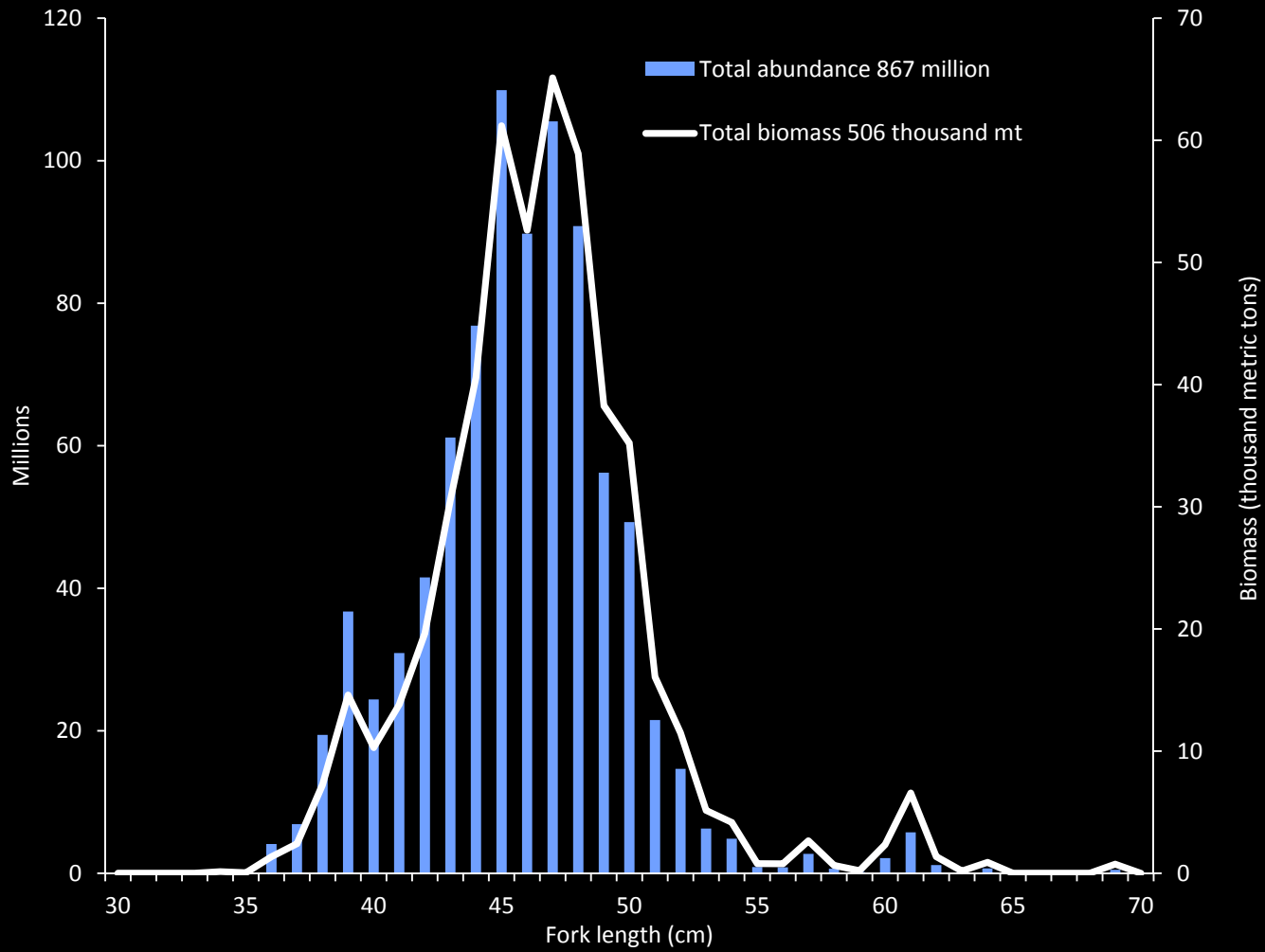
Pollock lengths

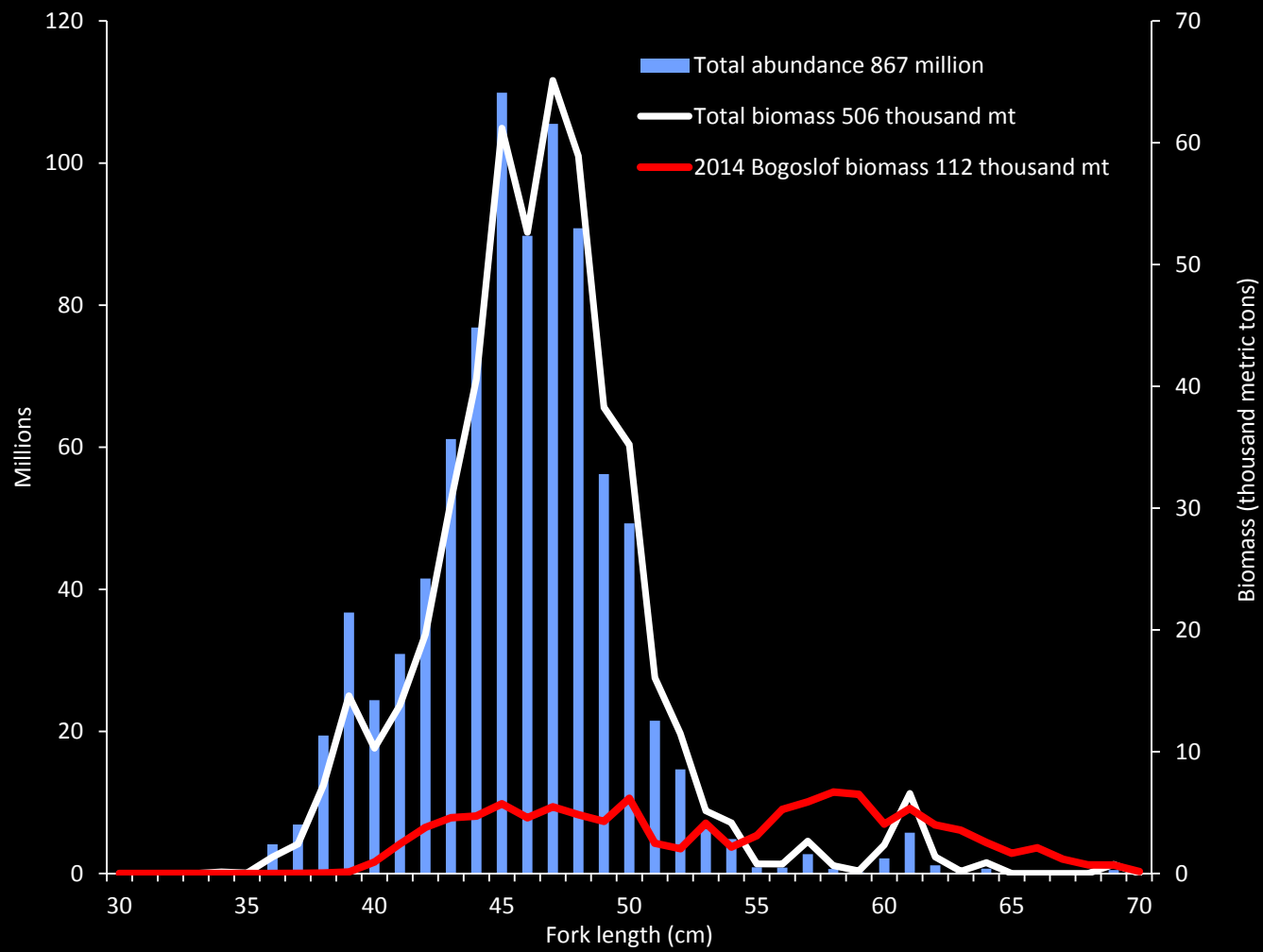


Bogoslof Island area AT survey March 2016

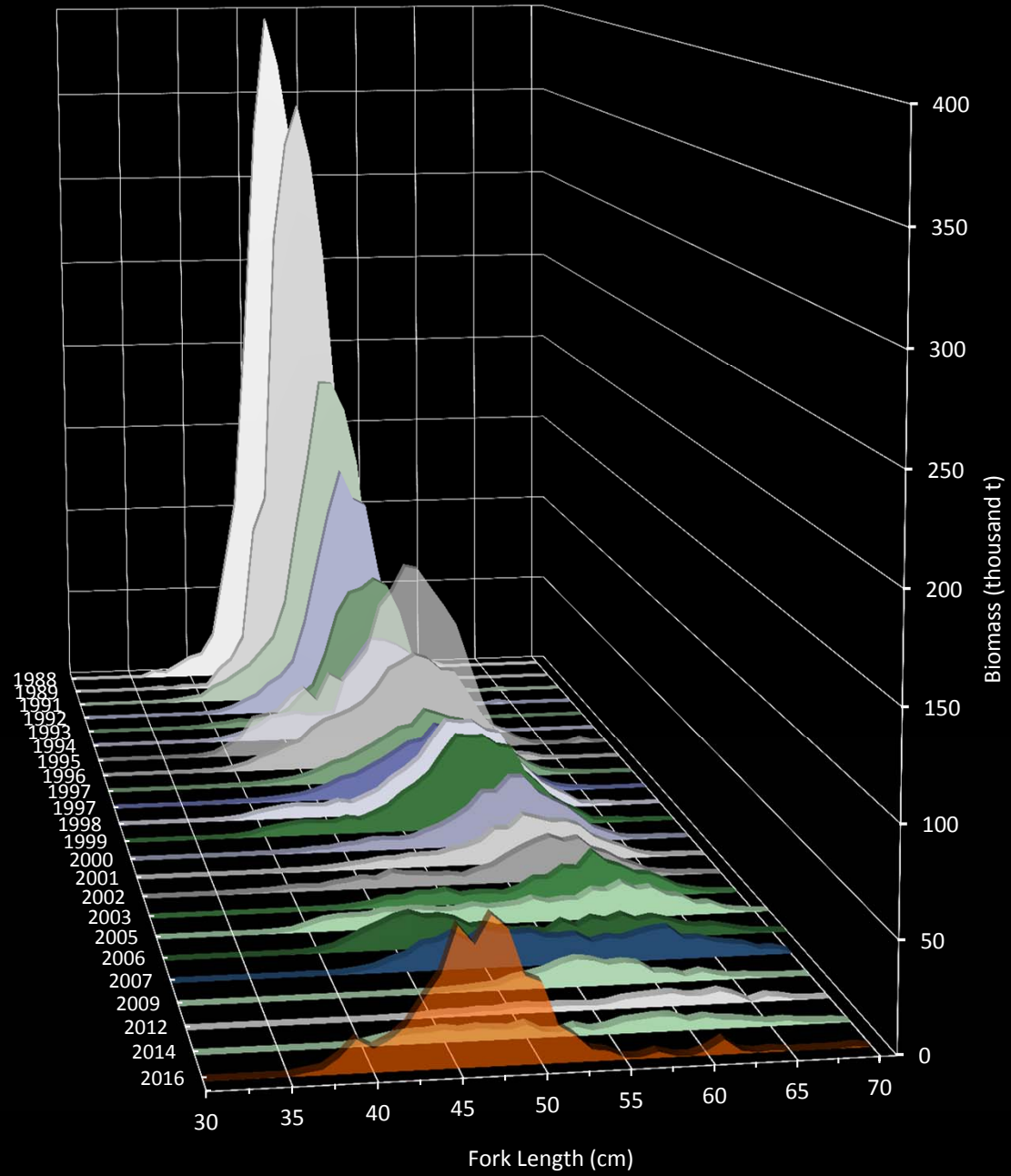


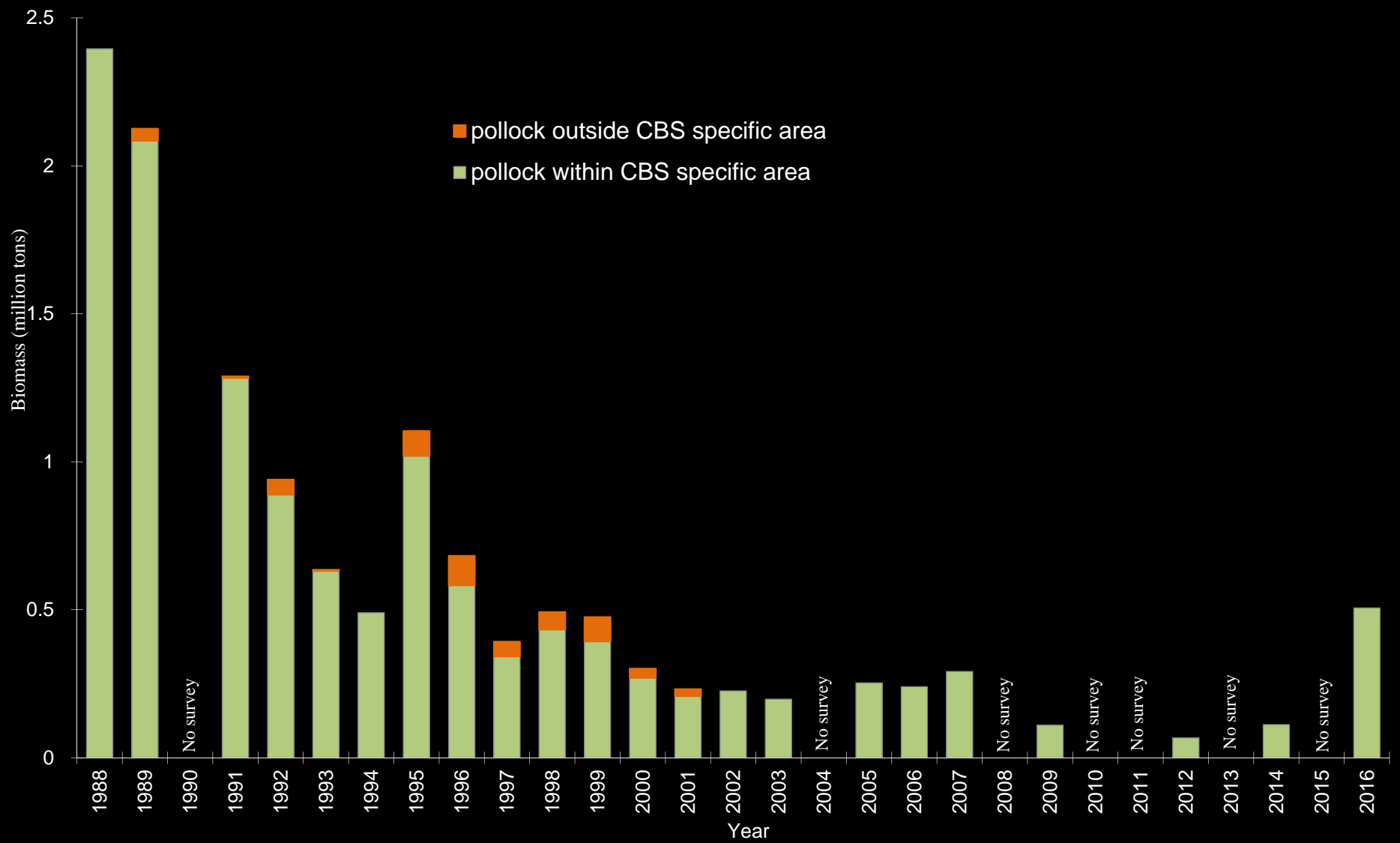
2016 population at length

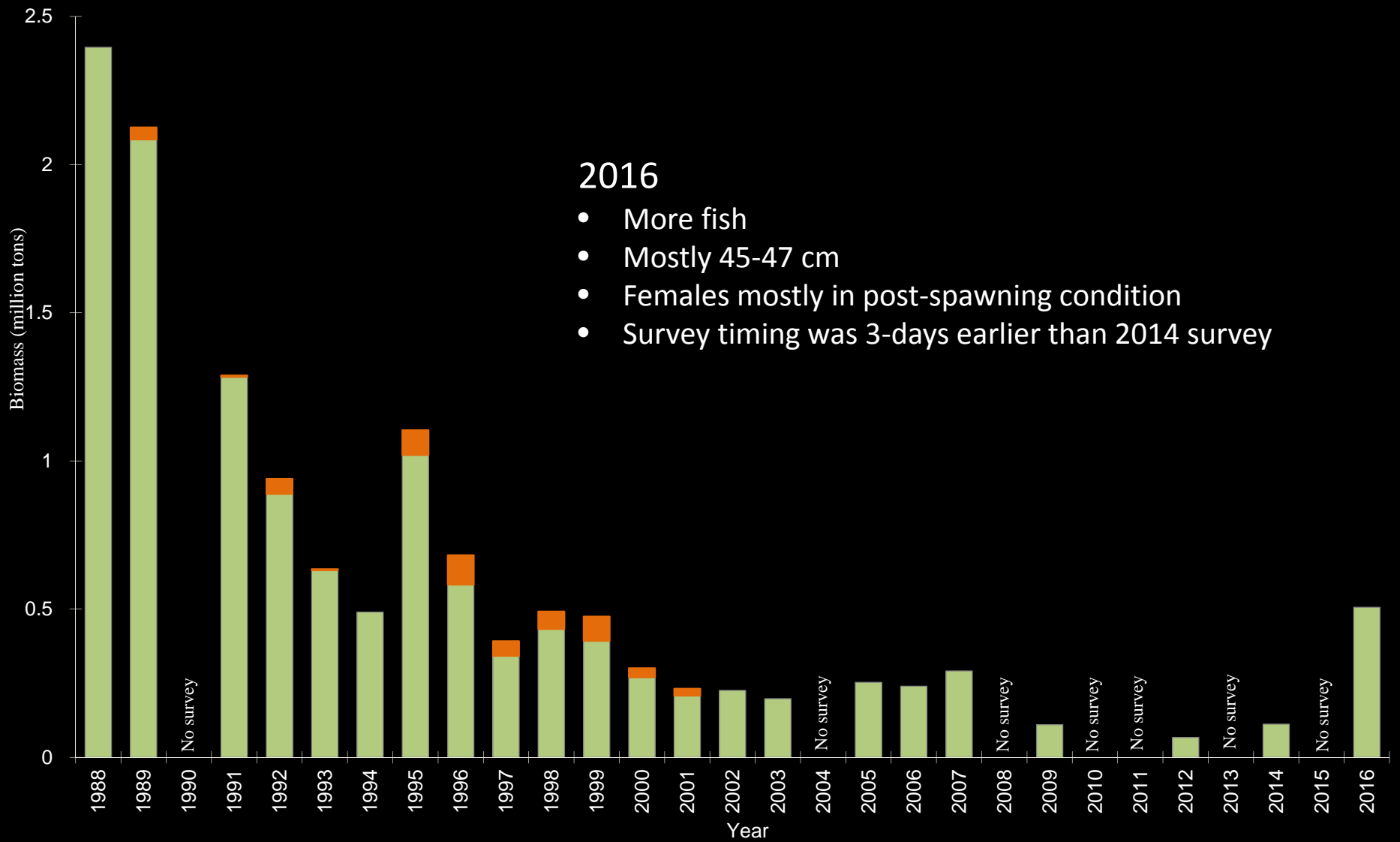




Historical biomass at length









Sandi, Matt, Denise, Chris, Kim, Nate, Darin, and Scott (not pictured)

Thank you shipmates!