

species	Jan-03	Feb-03	Mar-03	Apr-03	May-03	Jun-03	Jul-03	Aug-03	Sep-03	Oct-03	Nov-03	Dec-03
alaska plaice	0.0052	0.0053	0.0053	0.0052	0.0050	0.0049	0.0047	0.0048	0.0047	0.0047	0.0046	0.0044
alaska skate	0.0117	0.0120	0.0121	0.0132	0.0139	0.0135	0.0143	0.0147	0.0146	0.0148	0.0143	0.0139
aleutian skate	0.0111	0.0112	0.0114	0.0124	0.0132	0.0128	0.0137	0.0139	0.0137	0.0143	0.0138	0.0134
arrowtooth flounder	0.0133	0.0135	0.0137	0.0149	0.0156	0.0151	0.0160	0.0162	0.0160	0.0166	0.0160	0.0156
atka mackerel	0.0158	0.0161	0.0160	0.0172	0.0173	0.0168	0.0169	0.0179	0.0179	0.0182	0.0175	0.0170
bering skate	0.0120	0.0121	0.0123	0.0134	0.0142	0.0138	0.0147	0.0149	0.0147	0.0153	0.0148	0.0143
bigmouth sculpin	0.0128	0.0130	0.0131	0.0143	0.0150	0.0146	0.0156	0.0156	0.0155	0.0161	0.0155	0.0151
black rockfish	0.0071	0.0074	0.0074	0.0076	0.0078	0.0078	0.0078	0.0080	0.0080	0.0081	0.0078	0.0076
blackspotted rockfish	0.0107	0.0106	0.0109	0.0120	0.0129	0.0125	0.0135	0.0137	0.0134	0.0137	0.0133	0.0129
dover sole	0.0097	0.0097	0.0100	0.0111	0.0119	0.0115	0.0127	0.0125	0.0123	0.0126	0.0122	0.0118
dusky rockfish	0.0196	0.0204	0.0203	0.0223	0.0229	0.0222	0.0249	0.0251	0.0255	0.0258	0.0249	0.0242
flathead sole	0.0135	0.0139	0.0140	0.0147	0.0148	0.0145	0.0149	0.0153	0.0152	0.0157	0.0152	0.0147
great sculpin	0.0090	0.0095	0.0095	0.0099	0.0103	0.0101	0.0101	0.0106	0.0106	0.0106	0.0102	0.0099
greenstriped rockfish	0.0122	0.0124	0.0126	0.0136	0.0143	0.0139	0.0149	0.0151	0.0151	0.0154	0.0149	0.0145
harlequin rockfish	0.0069	0.0067	0.0066	0.0073	0.0079	0.0077	0.0094	0.0093	0.0095	0.0093	0.0090	0.0087
longspine thornyhead	0.0098	0.0098	0.0101	0.0111	0.0119	0.0115	0.0125	0.0125	0.0123	0.0124	0.0120	0.0117
northern rock sole	0.0121	0.0124	0.0124	0.0133	0.0134	0.0131	0.0130	0.0135	0.0139	0.0142	0.0137	0.0133
northern rockfish	0.0150	0.0149	0.0152	0.0166	0.0173	0.0168	0.0176	0.0191	0.0193	0.0195	0.0188	0.0183
octopus	0.0124	0.0126	0.0129	0.0139	0.0147	0.0143	0.0152	0.0156	0.0155	0.0158	0.0152	0.0148
pacific cod	0.0160	0.0167	0.0169	0.0176	0.0178	0.0174	0.0178	0.0182	0.0182	0.0186	0.0179	0.0174
pacific ocean perch	0.0118	0.0120	0.0122	0.0136	0.0146	0.0141	0.0156	0.0157	0.0156	0.0160	0.0155	0.0150
pygmy rockfish	0.0109	0.0112	0.0113	0.0123	0.0128	0.0125	0.0131	0.0133	0.0132	0.0136	0.0132	0.0128
quillback rockfish	0.0112	0.0118	0.0119	0.0123	0.0122	0.0119	0.0124	0.0126	0.0127	0.0128	0.0123	0.0120
redbanded rockfish	0.0116	0.0117	0.0120	0.0132	0.0140	0.0135	0.0146	0.0148	0.0146	0.0150	0.0144	0.0140
redstriped rockfish	0.0129	0.0131	0.0133	0.0145	0.0153	0.0149	0.0159	0.0162	0.0161	0.0164	0.0159	0.0154
rex sole	0.0115	0.0115	0.0118	0.0130	0.0139	0.0134	0.0144	0.0147	0.0145	0.0150	0.0144	0.0140
rosethorn rockfish	0.0117	0.0118	0.0121	0.0132	0.0141	0.0136	0.0147	0.0150	0.0148	0.0151	0.0145	0.0141
rougeye rockfish	0.0111	0.0111	0.0114	0.0126	0.0134	0.0130	0.0141	0.0142	0.0139	0.0144	0.0139	0.0135
sablefish	0.0113	0.0113	0.0116	0.0130	0.0138	0.0134	0.0146	0.0145	0.0143	0.0147	0.0142	0.0138
sharpchin rockfish	0.0123	0.0125	0.0127	0.0140	0.0148	0.0143	0.0155	0.0157	0.0155	0.0159	0.0154	0.0149
shortraker rockfish	0.0085	0.0083	0.0088	0.0096	0.0101	0.0098	0.0121	0.0123	0.0120	0.0118	0.0114	0.0110
shortspine thornyhead	0.0080	0.0078	0.0082	0.0089	0.0094	0.0092	0.0111	0.0113	0.0110	0.0108	0.0105	0.0101
silvergray rockfish	0.0020	0.0020	0.0020	0.0020	0.0021	0.0021	0.0027	0.0026	0.0025	0.0025	0.0024	0.0023
southern rock sole	0.0116	0.0124	0.0123	0.0125	0.0127	0.0125	0.0127	0.0129	0.0130	0.0130	0.0125	0.0122
walleye pollock	0.0130	0.0132	0.0134	0.0146	0.0153	0.0149	0.0155	0.0156	0.0155	0.0161	0.0155	0.0151
yellow irish lord	0.0157	0.0165	0.0165	0.0168	0.0167	0.0163	0.0158	0.0160	0.0160	0.0159	0.0153	0.0149
yelloweye rockfish	0.0114	0.0117	0.0119	0.0130	0.0136	0.0133	0.0139	0.0142	0.0141	0.0147	0.0142	0.0138
yellowfin sole	0.0084	0.0085	0.0086	0.0083	0.0080	0.0078	0.0076	0.0077	0.0076	0.0075	0.0073	0.0071

species	Jan-04	Feb-04	Mar-04	Apr-04	May-04	Jun-04	Jul-04	Aug-04	Sep-04	Oct-04	Nov-04	Dec-04
alaska plaice	0.0046	0.0048	0.0048	0.0047	0.0046	0.0044	0.0043	0.0045	0.0046	0.0049	0.0047	0.0046
alaska skate	0.0136	0.0135	0.0132	0.0136	0.0133	0.0130	0.0137	0.0135	0.0135	0.0132	0.0128	0.0123
aleutian skate	0.0131	0.0129	0.0126	0.0130	0.0127	0.0122	0.0130	0.0128	0.0127	0.0124	0.0120	0.0115
arrowtooth flounder	0.0153	0.0151	0.0148	0.0153	0.0150	0.0145	0.0153	0.0151	0.0149	0.0146	0.0142	0.0137
atka mackerel	0.0167	0.0174	0.0182	0.0190	0.0185	0.0183	0.0191	0.0187	0.0187	0.0182	0.0176	0.0170
bering skate	0.0140	0.0138	0.0135	0.0140	0.0136	0.0132	0.0139	0.0137	0.0136	0.0133	0.0129	0.0124
bigmouth sculpin	0.0148	0.0146	0.0142	0.0147	0.0144	0.0139	0.0148	0.0145	0.0144	0.0141	0.0136	0.0131
black rockfish	0.0078	0.0078	0.0076	0.0078	0.0077	0.0076	0.0077	0.0075	0.0078	0.0077	0.0075	0.0072
blackspotted rockfish	0.0126	0.0124	0.0122	0.0127	0.0123	0.0119	0.0129	0.0126	0.0123	0.0120	0.0117	0.0112
dover sole	0.0115	0.0113	0.0111	0.0115	0.0112	0.0108	0.0117	0.0114	0.0111	0.0108	0.0104	0.0101
dusky rockfish	0.0236	0.0230	0.0225	0.0233	0.0228	0.0221	0.0244	0.0237	0.0237	0.0230	0.0223	0.0216
flathead sole	0.0146	0.0145	0.0143	0.0148	0.0146	0.0143	0.0150	0.0148	0.0148	0.0145	0.0141	0.0136
great sculpin	0.0100	0.0100	0.0099	0.0100	0.0100	0.0099	0.0099	0.0099	0.0102	0.0100	0.0097	0.0094
greenstriped rockfish	0.0142	0.0139	0.0136	0.0140	0.0137	0.0133	0.0141	0.0139	0.0138	0.0135	0.0130	0.0126
harlequin rockfish	0.0085	0.0082	0.0080	0.0080	0.0078	0.0075	0.0085	0.0083	0.0086	0.0084	0.0081	0.0078
longspine thornyhead	0.0114	0.0114	0.0112	0.0117	0.0113	0.0110	0.0119	0.0116	0.0113	0.0111	0.0107	0.0104
northern rock sole	0.0132	0.0136	0.0138	0.0137	0.0136	0.0136	0.0134	0.0132	0.0139	0.0137	0.0133	0.0128
northern rockfish	0.0179	0.0176	0.0173	0.0180	0.0176	0.0171	0.0186	0.0180	0.0184	0.0179	0.0173	0.0168
octopus	0.0146	0.0144	0.0141	0.0144	0.0141	0.0137	0.0146	0.0144	0.0145	0.0142	0.0137	0.0132
pacific cod	0.0174	0.0173	0.0170	0.0174	0.0171	0.0168	0.0172	0.0170	0.0173	0.0170	0.0164	0.0159
pacific ocean perch	0.0147	0.0143	0.0139	0.0144	0.0140	0.0136	0.0148	0.0145	0.0142	0.0138	0.0134	0.0129
pygmy rockfish	0.0126	0.0124	0.0121	0.0125	0.0122	0.0119	0.0124	0.0123	0.0123	0.0120	0.0116	0.0112
quillback rockfish	0.0121	0.0120	0.0118	0.0120	0.0118	0.0115	0.0119	0.0117	0.0121	0.0118	0.0115	0.0111
redbanded rockfish	0.0137	0.0135	0.0132	0.0136	0.0133	0.0129	0.0138	0.0135	0.0132	0.0129	0.0125	0.0120
redstriped rockfish	0.0151	0.0148	0.0145	0.0150	0.0147	0.0142	0.0152	0.0150	0.0147	0.0144	0.0139	0.0134
rex sole	0.0137	0.0134	0.0131	0.0137	0.0133	0.0129	0.0138	0.0135	0.0132	0.0129	0.0125	0.0120
rosethorn rockfish	0.0138	0.0136	0.0133	0.0137	0.0134	0.0130	0.0139	0.0137	0.0135	0.0131	0.0127	0.0123
rougeye rockfish	0.0131	0.0129	0.0127	0.0132	0.0128	0.0124	0.0134	0.0131	0.0128	0.0125	0.0121	0.0116
sablefish	0.0134	0.0132	0.0130	0.0135	0.0131	0.0127	0.0136	0.0133	0.0129	0.0126	0.0122	0.0118
sharpchin rockfish	0.0146	0.0143	0.0140	0.0145	0.0142	0.0137	0.0147	0.0144	0.0142	0.0138	0.0134	0.0129
shortraker rockfish	0.0107	0.0106	0.0105	0.0106	0.0103	0.0100	0.0116	0.0113	0.0111	0.0107	0.0104	0.0101
shortspine thornyhead	0.0099	0.0097	0.0096	0.0099	0.0096	0.0093	0.0108	0.0105	0.0103	0.0100	0.0097	0.0094
silvergray rockfish	0.0023	0.0022	0.0021	0.0022	0.0021	0.0020	0.0025	0.0025	0.0024	0.0023	0.0022	0.0021
southern rock sole	0.0125	0.0125	0.0123	0.0123	0.0123	0.0121	0.0123	0.0122	0.0127	0.0125	0.0121	0.0117
walleye pollock	0.0148	0.0146	0.0143	0.0149	0.0146	0.0141	0.0148	0.0146	0.0145	0.0142	0.0138	0.0133
yellow irish lord	0.0150	0.0158	0.0158	0.0157	0.0156	0.0154	0.0152	0.0152	0.0162	0.0161	0.0156	0.0151
yelloweye rockfish	0.0136	0.0133	0.0129	0.0134	0.0131	0.0127	0.0133	0.0131	0.0131	0.0128	0.0124	0.0120
yellowfin sole	0.0073	0.0075	0.0075	0.0073	0.0072	0.0070	0.0068	0.0073	0.0075	0.0079	0.0077	0.0075

species	Jan-05	Feb-05	Mar-05	Apr-05	May-05	Jun-05	Jul-05	Aug-05	Sep-05	Oct-05	Nov-05	Dec-05
alaska plaice	0.0046	0.0047	0.0047	0.0046	0.0044	0.0043	0.0042	0.0042	0.0046	0.0055	0.0053	0.0051
alaska skate	0.0120	0.0120	0.0123	0.0126	0.0124	0.0121	0.0133	0.0132	0.0130	0.0127	0.0123	0.0119
aleutian skate	0.0112	0.0112	0.0114	0.0119	0.0117	0.0114	0.0128	0.0124	0.0124	0.0121	0.0117	0.0113
arrowtooth flounder	0.0133	0.0134	0.0138	0.0143	0.0141	0.0137	0.0150	0.0147	0.0147	0.0144	0.0139	0.0135
atka mackerel	0.0166	0.0166	0.0182	0.0185	0.0184	0.0179	0.0185	0.0181	0.0179	0.0173	0.0168	0.0162
bering skate	0.0121	0.0120	0.0124	0.0130	0.0127	0.0124	0.0137	0.0136	0.0135	0.0131	0.0127	0.0123
bigmouth sculpin	0.0128	0.0128	0.0132	0.0137	0.0134	0.0131	0.0145	0.0142	0.0142	0.0139	0.0134	0.0130
black rockfish	0.0073	0.0072	0.0072	0.0072	0.0071	0.0072	0.0075	0.0075	0.0076	0.0075	0.0073	0.0070
blackspotted rockfish	0.0109	0.0109	0.0112	0.0117	0.0114	0.0111	0.0124	0.0120	0.0119	0.0117	0.0113	0.0109
dover sole	0.0097	0.0098	0.0103	0.0109	0.0107	0.0104	0.0115	0.0112	0.0111	0.0107	0.0103	0.0100
dusky rockfish	0.0209	0.0207	0.0210	0.0216	0.0211	0.0205	0.0231	0.0225	0.0221	0.0215	0.0208	0.0201
flathead sole	0.0133	0.0134	0.0138	0.0142	0.0140	0.0137	0.0147	0.0147	0.0148	0.0146	0.0141	0.0136
great sculpin	0.0094	0.0093	0.0092	0.0092	0.0092	0.0093	0.0096	0.0097	0.0097	0.0096	0.0093	0.0090
greenstriped rockfish	0.0123	0.0122	0.0125	0.0131	0.0128	0.0126	0.0140	0.0138	0.0137	0.0133	0.0129	0.0124
harlequin rockfish	0.0076	0.0073	0.0073	0.0072	0.0070	0.0068	0.0083	0.0081	0.0079	0.0076	0.0074	0.0071
longspine thornyhead	0.0101	0.0101	0.0105	0.0109	0.0107	0.0104	0.0113	0.0110	0.0108	0.0107	0.0103	0.0100
northern rock sole	0.0126	0.0126	0.0129	0.0129	0.0130	0.0130	0.0134	0.0134	0.0133	0.0132	0.0128	0.0124
northern rockfish	0.0162	0.0159	0.0163	0.0166	0.0164	0.0160	0.0178	0.0172	0.0169	0.0164	0.0159	0.0154
octopus	0.0129	0.0127	0.0129	0.0131	0.0128	0.0126	0.0140	0.0139	0.0138	0.0135	0.0130	0.0126
pacific cod	0.0158	0.0159	0.0162	0.0166	0.0164	0.0162	0.0174	0.0174	0.0175	0.0172	0.0166	0.0161
pacific ocean perch	0.0125	0.0123	0.0123	0.0128	0.0125	0.0122	0.0138	0.0135	0.0133	0.0130	0.0126	0.0121
pygmy rockfish	0.0109	0.0109	0.0112	0.0118	0.0116	0.0114	0.0124	0.0124	0.0122	0.0119	0.0115	0.0111
quillback rockfish	0.0111	0.0112	0.0113	0.0117	0.0116	0.0114	0.0121	0.0122	0.0122	0.0120	0.0116	0.0112
redbanded rockfish	0.0117	0.0117	0.0121	0.0127	0.0124	0.0121	0.0134	0.0131	0.0130	0.0127	0.0122	0.0118
redstriped rockfish	0.0131	0.0130	0.0134	0.0139	0.0137	0.0134	0.0148	0.0146	0.0145	0.0141	0.0136	0.0132
rex sole	0.0117	0.0117	0.0121	0.0127	0.0124	0.0121	0.0134	0.0130	0.0129	0.0126	0.0122	0.0117
rosethorn rockfish	0.0119	0.0119	0.0122	0.0127	0.0125	0.0122	0.0136	0.0134	0.0132	0.0129	0.0124	0.0120
rougeye rockfish	0.0113	0.0113	0.0117	0.0122	0.0120	0.0116	0.0129	0.0125	0.0124	0.0121	0.0117	0.0113
sablefish	0.0114	0.0115	0.0120	0.0128	0.0125	0.0121	0.0133	0.0129	0.0128	0.0124	0.0120	0.0116
sharpchin rockfish	0.0125	0.0125	0.0129	0.0135	0.0132	0.0128	0.0143	0.0139	0.0138	0.0135	0.0130	0.0126
shortraker rockfish	0.0098	0.0095	0.0095	0.0095	0.0093	0.0090	0.0103	0.0100	0.0097	0.0094	0.0091	0.0088
shortspine thornyhead	0.0091	0.0088	0.0089	0.0089	0.0088	0.0085	0.0097	0.0094	0.0091	0.0088	0.0086	0.0083
silvergray rockfish	0.0021	0.0020	0.0020	0.0019	0.0019	0.0018	0.0025	0.0024	0.0023	0.0023	0.0022	0.0021
southern rock sole	0.0119	0.0117	0.0116	0.0115	0.0115	0.0116	0.0121	0.0123	0.0124	0.0123	0.0119	0.0115
walleye pollock	0.0130	0.0130	0.0135	0.0141	0.0138	0.0134	0.0145	0.0143	0.0143	0.0141	0.0136	0.0132
yellow irish lord	0.0150	0.0151	0.0152	0.0152	0.0152	0.0152	0.0155	0.0164	0.0165	0.0167	0.0162	0.0157
yelloweye rockfish	0.0116	0.0115	0.0117	0.0121	0.0118	0.0116	0.0129	0.0128	0.0127	0.0125	0.0120	0.0116
yellowfin sole	0.0075	0.0076	0.0076	0.0074	0.0072	0.0071	0.0070	0.0072	0.0078	0.0089	0.0086	0.0083

species	Jan-06	Feb-06	Mar-06	Apr-06	May-06	Jun-06	Jul-06	Aug-06	Sep-06	Oct-06	Nov-06	Dec-06
alaska plaice	0.0051	0.0052	0.0053	0.0052	0.0050	0.0049	0.0047	0.0047	0.0050	0.0058	0.0056	0.0055
alaska skate	0.0116	0.0117	0.0120	0.0130	0.0128	0.0125	0.0133	0.0136	0.0134	0.0134	0.0130	0.0126
aleutian skate	0.0110	0.0110	0.0113	0.0123	0.0119	0.0115	0.0123	0.0127	0.0127	0.0126	0.0122	0.0118
arrowtooth flounder	0.0131	0.0133	0.0136	0.0147	0.0143	0.0140	0.0146	0.0148	0.0149	0.0149	0.0144	0.0140
atka mackerel	0.0158	0.0166	0.0168	0.0172	0.0171	0.0166	0.0168	0.0167	0.0162	0.0160	0.0155	0.0150
bering skate	0.0119	0.0119	0.0123	0.0133	0.0131	0.0127	0.0134	0.0137	0.0137	0.0136	0.0132	0.0127
bigmouth sculpin	0.0126	0.0127	0.0131	0.0140	0.0137	0.0133	0.0140	0.0143	0.0143	0.0143	0.0138	0.0134
black rockfish	0.0070	0.0071	0.0070	0.0073	0.0072	0.0070	0.0071	0.0073	0.0073	0.0074	0.0072	0.0070
blackspotted rockfish	0.0106	0.0105	0.0109	0.0116	0.0113	0.0109	0.0117	0.0120	0.0119	0.0117	0.0113	0.0110
dover sole	0.0097	0.0097	0.0101	0.0106	0.0103	0.0100	0.0105	0.0106	0.0105	0.0103	0.0100	0.0096
dusky rockfish	0.0195	0.0199	0.0197	0.0207	0.0201	0.0196	0.0212	0.0210	0.0205	0.0205	0.0199	0.0192
flathead sole	0.0133	0.0136	0.0140	0.0151	0.0149	0.0145	0.0151	0.0152	0.0152	0.0153	0.0148	0.0143
great sculpin	0.0089	0.0092	0.0091	0.0098	0.0098	0.0095	0.0098	0.0100	0.0100	0.0101	0.0098	0.0095
greenstriped rockfish	0.0121	0.0122	0.0125	0.0136	0.0133	0.0130	0.0137	0.0140	0.0139	0.0139	0.0134	0.0130
harlequin rockfish	0.0069	0.0067	0.0065	0.0064	0.0062	0.0060	0.0070	0.0068	0.0066	0.0066	0.0064	0.0062
longspine thornyhead	0.0097	0.0097	0.0101	0.0108	0.0104	0.0101	0.0107	0.0108	0.0106	0.0105	0.0102	0.0098
northern rock sole	0.0121	0.0126	0.0125	0.0126	0.0127	0.0123	0.0123	0.0124	0.0122	0.0121	0.0118	0.0114
northern rockfish	0.0149	0.0150	0.0147	0.0155	0.0153	0.0148	0.0160	0.0159	0.0156	0.0155	0.0150	0.0145
octopus	0.0123	0.0124	0.0125	0.0133	0.0131	0.0128	0.0137	0.0141	0.0141	0.0141	0.0136	0.0132
pacific cod	0.0158	0.0162	0.0165	0.0174	0.0172	0.0167	0.0173	0.0175	0.0175	0.0177	0.0171	0.0166
pacific ocean perch	0.0118	0.0118	0.0117	0.0128	0.0124	0.0121	0.0131	0.0134	0.0132	0.0131	0.0127	0.0123
pygmy rockfish	0.0108	0.0109	0.0113	0.0123	0.0122	0.0119	0.0125	0.0128	0.0127	0.0127	0.0123	0.0119
quillback rockfish	0.0110	0.0113	0.0115	0.0122	0.0121	0.0118	0.0122	0.0122	0.0122	0.0123	0.0119	0.0116
redbanded rockfish	0.0115	0.0115	0.0119	0.0130	0.0126	0.0123	0.0130	0.0133	0.0132	0.0130	0.0126	0.0122
redstriped rockfish	0.0128	0.0129	0.0132	0.0144	0.0141	0.0137	0.0145	0.0148	0.0147	0.0147	0.0142	0.0137
rex sole	0.0114	0.0114	0.0118	0.0128	0.0124	0.0121	0.0128	0.0131	0.0129	0.0128	0.0124	0.0120
rosethorn rockfish	0.0117	0.0117	0.0120	0.0131	0.0129	0.0125	0.0133	0.0136	0.0135	0.0134	0.0130	0.0126
rougeye rockfish	0.0110	0.0110	0.0114	0.0123	0.0119	0.0116	0.0123	0.0125	0.0124	0.0123	0.0119	0.0115
sablefish	0.0112	0.0112	0.0117	0.0126	0.0122	0.0119	0.0124	0.0126	0.0124	0.0122	0.0118	0.0114
sharpchin rockfish	0.0122	0.0123	0.0126	0.0137	0.0133	0.0129	0.0138	0.0141	0.0140	0.0139	0.0135	0.0130
shortraker rockfish	0.0085	0.0083	0.0083	0.0083	0.0081	0.0079	0.0089	0.0090	0.0089	0.0086	0.0084	0.0081
shortspine thornyhead	0.0080	0.0078	0.0078	0.0077	0.0075	0.0073	0.0082	0.0082	0.0080	0.0078	0.0075	0.0073
silvergray rockfish	0.0020	0.0020	0.0020	0.0019	0.0019	0.0018	0.0021	0.0022	0.0021	0.0021	0.0020	0.0019
southern rock sole	0.0114	0.0118	0.0117	0.0119	0.0120	0.0117	0.0120	0.0121	0.0121	0.0123	0.0119	0.0115
walleye pollock	0.0128	0.0130	0.0134	0.0146	0.0142	0.0139	0.0144	0.0147	0.0147	0.0147	0.0142	0.0138
yellow irish lord	0.0155	0.0162	0.0162	0.0170	0.0174	0.0169	0.0171	0.0172	0.0172	0.0175	0.0170	0.0165
yelloweye rockfish	0.0113	0.0115	0.0116	0.0127	0.0125	0.0122	0.0129	0.0132	0.0133	0.0133	0.0129	0.0125
yellowfin sole	0.0083	0.0084	0.0084	0.0082	0.0080	0.0078	0.0077	0.0078	0.0082	0.0093	0.0091	0.0088

species	Jan-07	Feb-07	Mar-07	Apr-07	May-07	Jun-07	Jul-07	Aug-07	Sep-07	Oct-07	Nov-07	Dec-07
alaska plaice	0.0055	0.0056	0.0057	0.0058	0.0056	0.0054	0.0052	0.0051	0.0050	0.0049	0.0048	0.0047
alaska skate	0.0123	0.0124	0.0127	0.0129	0.0133	0.0130	0.0133	0.0133	0.0134	0.0133	0.0130	0.0125
aleutian skate	0.0116	0.0117	0.0119	0.0122	0.0125	0.0122	0.0123	0.0121	0.0123	0.0122	0.0118	0.0114
arrowtooth flounder	0.0137	0.0140	0.0143	0.0147	0.0150	0.0146	0.0146	0.0145	0.0146	0.0145	0.0141	0.0136
atka mackerel	0.0146	0.0161	0.0172	0.0169	0.0181	0.0175	0.0175	0.0176	0.0172	0.0169	0.0164	0.0158
bering skate	0.0124	0.0126	0.0128	0.0131	0.0135	0.0131	0.0133	0.0131	0.0133	0.0131	0.0128	0.0123
bigmouth sculpin	0.0131	0.0134	0.0137	0.0140	0.0143	0.0139	0.0140	0.0139	0.0140	0.0139	0.0135	0.0130
black rockfish	0.0069	0.0073	0.0073	0.0073	0.0075	0.0073	0.0073	0.0073	0.0075	0.0076	0.0074	0.0072
blackspotted rockfish	0.0107	0.0106	0.0109	0.0111	0.0114	0.0112	0.0115	0.0114	0.0113	0.0111	0.0107	0.0104
dover sole	0.0093	0.0093	0.0093	0.0096	0.0099	0.0097	0.0099	0.0098	0.0097	0.0094	0.0092	0.0088
dusky rockfish	0.0187	0.0193	0.0198	0.0200	0.0206	0.0203	0.0206	0.0205	0.0204	0.0201	0.0194	0.0188
flathead sole	0.0141	0.0145	0.0149	0.0153	0.0155	0.0150	0.0151	0.0150	0.0153	0.0152	0.0148	0.0143
great sculpin	0.0094	0.0098	0.0101	0.0102	0.0104	0.0101	0.0103	0.0103	0.0106	0.0106	0.0104	0.0101
greenstriped rockfish	0.0127	0.0129	0.0130	0.0133	0.0136	0.0133	0.0135	0.0134	0.0135	0.0133	0.0130	0.0126
harlequin rockfish	0.0060	0.0058	0.0058	0.0056	0.0059	0.0060	0.0064	0.0064	0.0063	0.0062	0.0060	0.0058
longspine thornyhead	0.0096	0.0096	0.0099	0.0101	0.0104	0.0102	0.0105	0.0104	0.0102	0.0100	0.0097	0.0094
northern rock sole	0.0111	0.0118	0.0121	0.0121	0.0126	0.0122	0.0121	0.0122	0.0121	0.0120	0.0117	0.0113
northern rockfish	0.0141	0.0143	0.0148	0.0147	0.0152	0.0150	0.0155	0.0156	0.0155	0.0153	0.0148	0.0143
octopus	0.0129	0.0130	0.0133	0.0134	0.0137	0.0134	0.0138	0.0138	0.0141	0.0140	0.0137	0.0132
pacific cod	0.0164	0.0171	0.0174	0.0177	0.0180	0.0175	0.0175	0.0175	0.0178	0.0177	0.0173	0.0168
pacific ocean perch	0.0119	0.0121	0.0123	0.0126	0.0131	0.0128	0.0132	0.0131	0.0130	0.0128	0.0124	0.0120
pygmy rockfish	0.0116	0.0119	0.0120	0.0123	0.0125	0.0122	0.0124	0.0123	0.0125	0.0124	0.0121	0.0117
quillback rockfish	0.0114	0.0120	0.0121	0.0125	0.0125	0.0122	0.0123	0.0122	0.0126	0.0125	0.0123	0.0119
redbanded rockfish	0.0119	0.0120	0.0122	0.0126	0.0129	0.0126	0.0128	0.0127	0.0127	0.0125	0.0121	0.0117
redstriped rockfish	0.0134	0.0135	0.0137	0.0140	0.0144	0.0140	0.0143	0.0142	0.0142	0.0140	0.0136	0.0132
rex sole	0.0117	0.0118	0.0120	0.0124	0.0127	0.0124	0.0126	0.0124	0.0125	0.0123	0.0119	0.0115
rosethorn rockfish	0.0122	0.0122	0.0124	0.0127	0.0130	0.0127	0.0131	0.0130	0.0129	0.0128	0.0124	0.0120
rougeye rockfish	0.0112	0.0112	0.0114	0.0117	0.0121	0.0118	0.0120	0.0119	0.0119	0.0117	0.0113	0.0109
sablefish	0.0111	0.0112	0.0112	0.0117	0.0121	0.0118	0.0120	0.0119	0.0118	0.0115	0.0111	0.0107
sharpchin rockfish	0.0127	0.0128	0.0130	0.0133	0.0137	0.0134	0.0136	0.0134	0.0135	0.0133	0.0129	0.0125
shortraker rockfish	0.0078	0.0076	0.0077	0.0075	0.0075	0.0076	0.0086	0.0086	0.0083	0.0081	0.0079	0.0076
shortspine thornyhead	0.0071	0.0069	0.0069	0.0068	0.0070	0.0070	0.0078	0.0078	0.0077	0.0075	0.0073	0.0070
silvergray rockfish	0.0019	0.0018	0.0018	0.0017	0.0017	0.0018	0.0020	0.0020	0.0020	0.0019	0.0019	0.0018
southern rock sole	0.0115	0.0122	0.0122	0.0122	0.0123	0.0120	0.0122	0.0123	0.0125	0.0125	0.0123	0.0119
walleye pollock	0.0135	0.0137	0.0140	0.0144	0.0147	0.0143	0.0144	0.0143	0.0144	0.0143	0.0139	0.0134
yellow irish lord	0.0163	0.0170	0.0173	0.0175	0.0176	0.0171	0.0176	0.0179	0.0182	0.0181	0.0178	0.0172
yelloweye rockfish	0.0122	0.0125	0.0127	0.0130	0.0133	0.0130	0.0131	0.0130	0.0132	0.0131	0.0128	0.0123
yellowfin sole	0.0088	0.0089	0.0090	0.0090	0.0088	0.0085	0.0083	0.0082	0.0081	0.0080	0.0078	0.0076

species	Jan-08	Feb-08	Mar-08	Apr-08	May-08	Jun-08	Jul-08	Aug-08	Sep-08	Oct-08	Nov-08	Dec-08
alaska plaice	0.0046	0.0046	0.0049	0.0050	0.0050	0.0048	0.0047	0.0046	0.0046	0.0046	0.0046	0.0044
alaska skate	0.0124	0.0126	0.0134	0.0150	0.0151	0.0146	0.0151	0.0160	0.0159	0.0162	0.0159	0.0153
aleutian skate	0.0112	0.0116	0.0123	0.0138	0.0135	0.0131	0.0135	0.0146	0.0146	0.0145	0.0141	0.0136
arrowtooth flounder	0.0134	0.0136	0.0147	0.0166	0.0165	0.0160	0.0163	0.0174	0.0173	0.0174	0.0169	0.0163
atka mackerel	0.0155	0.0167	0.0168	0.0172	0.0172	0.0167	0.0169	0.0165	0.0161	0.0162	0.0158	0.0152
bering skate	0.0121	0.0124	0.0133	0.0151	0.0151	0.0147	0.0149	0.0161	0.0160	0.0160	0.0156	0.0151
bigmouth sculpin	0.0128	0.0132	0.0142	0.0160	0.0159	0.0154	0.0157	0.0168	0.0168	0.0169	0.0164	0.0158
black rockfish	0.0072	0.0077	0.0077	0.0080	0.0080	0.0077	0.0077	0.0078	0.0079	0.0080	0.0078	0.0076
blackspotted rockfish	0.0101	0.0103	0.0108	0.0119	0.0116	0.0113	0.0118	0.0125	0.0123	0.0122	0.0119	0.0114
dover sole	0.0086	0.0085	0.0092	0.0105	0.0104	0.0101	0.0102	0.0113	0.0112	0.0111	0.0107	0.0103
dusky rockfish	0.0184	0.0184	0.0200	0.0234	0.0233	0.0228	0.0235	0.0258	0.0261	0.0260	0.0252	0.0243
flathead sole	0.0141	0.0145	0.0157	0.0177	0.0177	0.0172	0.0174	0.0185	0.0184	0.0186	0.0182	0.0176
great sculpin	0.0101	0.0104	0.0108	0.0115	0.0115	0.0112	0.0114	0.0119	0.0119	0.0122	0.0121	0.0117
greenstriped rockfish	0.0124	0.0124	0.0133	0.0152	0.0153	0.0148	0.0152	0.0164	0.0164	0.0165	0.0161	0.0155
harlequin rockfish	0.0056	0.0055	0.0053	0.0054	0.0054	0.0055	0.0060	0.0073	0.0071	0.0069	0.0067	0.0065
longspine thornyhead	0.0092	0.0092	0.0097	0.0106	0.0103	0.0101	0.0104	0.0110	0.0108	0.0107	0.0104	0.0100
northern rock sole	0.0112	0.0116	0.0117	0.0118	0.0118	0.0114	0.0113	0.0111	0.0109	0.0111	0.0110	0.0107
northern rockfish	0.0142	0.0147	0.0147	0.0150	0.0149	0.0145	0.0156	0.0160	0.0159	0.0162	0.0158	0.0152
octopus	0.0131	0.0135	0.0141	0.0154	0.0155	0.0150	0.0156	0.0163	0.0162	0.0164	0.0161	0.0155
pacific cod	0.0167	0.0172	0.0182	0.0199	0.0200	0.0193	0.0195	0.0201	0.0203	0.0206	0.0203	0.0195
pacific ocean perch	0.0118	0.0119	0.0128	0.0148	0.0147	0.0143	0.0148	0.0161	0.0162	0.0162	0.0157	0.0151
pygmy rockfish	0.0115	0.0116	0.0125	0.0143	0.0144	0.0139	0.0142	0.0154	0.0155	0.0156	0.0153	0.0148
quillback rockfish	0.0119	0.0121	0.0129	0.0143	0.0144	0.0140	0.0141	0.0151	0.0153	0.0155	0.0153	0.0148
redbanded rockfish	0.0115	0.0116	0.0126	0.0143	0.0143	0.0139	0.0142	0.0153	0.0153	0.0152	0.0148	0.0143
redstriped rockfish	0.0130	0.0131	0.0140	0.0158	0.0158	0.0154	0.0158	0.0170	0.0169	0.0170	0.0166	0.0160
rex sole	0.0113	0.0113	0.0123	0.0142	0.0140	0.0136	0.0140	0.0152	0.0151	0.0150	0.0146	0.0140
rosethorn rockfish	0.0118	0.0118	0.0127	0.0143	0.0143	0.0140	0.0144	0.0153	0.0152	0.0152	0.0149	0.0143
rougeye rockfish	0.0107	0.0107	0.0116	0.0131	0.0128	0.0125	0.0129	0.0139	0.0137	0.0136	0.0132	0.0127
sablefish	0.0105	0.0104	0.0113	0.0131	0.0130	0.0127	0.0128	0.0141	0.0141	0.0139	0.0135	0.0130
sharpchin rockfish	0.0123	0.0124	0.0134	0.0151	0.0150	0.0146	0.0150	0.0162	0.0161	0.0161	0.0157	0.0151
shortraker rockfish	0.0073	0.0072	0.0075	0.0075	0.0074	0.0073	0.0079	0.0081	0.0078	0.0076	0.0074	0.0071
shortspine thornyhead	0.0068	0.0067	0.0068	0.0069	0.0069	0.0068	0.0073	0.0082	0.0080	0.0077	0.0075	0.0072
silvergray rockfish	0.0017	0.0017	0.0017	0.0017	0.0017	0.0017	0.0018	0.0018	0.0017	0.0017	0.0016	0.0015
southern rock sole	0.0120	0.0124	0.0127	0.0133	0.0135	0.0131	0.0132	0.0134	0.0136	0.0140	0.0139	0.0135
walleye pollock	0.0132	0.0132	0.0144	0.0164	0.0163	0.0158	0.0160	0.0170	0.0170	0.0171	0.0167	0.0161
yellow irish lord	0.0172	0.0176	0.0182	0.0188	0.0193	0.0186	0.0187	0.0187	0.0185	0.0197	0.0199	0.0192
yelloweye rockfish	0.0122	0.0126	0.0134	0.0153	0.0153	0.0148	0.0152	0.0161	0.0162	0.0163	0.0159	0.0153
yellowfin sole	0.0075	0.0074	0.0079	0.0081	0.0080	0.0077	0.0076	0.0075	0.0075	0.0076	0.0075	0.0073

species	Jan-09	Feb-09	Mar-09	Apr-09	May-09	Jun-09	Jul-09	Aug-09	Sep-09	Oct-09	Nov-09	Dec-09
alaska plaice	0.0045	0.0045	0.0045	0.0044	0.0043	0.0042	0.0041	0.0042	0.0041	0.0044	0.0045	0.0043
alaska skate	0.0150	0.0154	0.0156	0.0163	0.0163	0.0160	0.0163	0.0169	0.0170	0.0174	0.0176	0.0172
aleutian skate	0.0133	0.0136	0.0136	0.0143	0.0141	0.0137	0.0140	0.0147	0.0148	0.0149	0.0150	0.0146
arrowtooth flounder	0.0159	0.0164	0.0165	0.0173	0.0172	0.0167	0.0168	0.0177	0.0179	0.0181	0.0182	0.0178
atka mackerel	0.0149	0.0157	0.0152	0.0152	0.0153	0.0149	0.0154	0.0157	0.0152	0.0158	0.0154	0.0149
bering skate	0.0147	0.0150	0.0151	0.0160	0.0159	0.0155	0.0157	0.0165	0.0167	0.0170	0.0170	0.0167
bigmouth sculpin	0.0154	0.0159	0.0158	0.0166	0.0165	0.0161	0.0163	0.0171	0.0172	0.0176	0.0175	0.0172
black rockfish	0.0076	0.0076	0.0077	0.0077	0.0078	0.0077	0.0076	0.0077	0.0076	0.0080	0.0080	0.0078
blackspotted rockfish	0.0111	0.0115	0.0114	0.0120	0.0119	0.0116	0.0120	0.0126	0.0125	0.0125	0.0122	0.0118
dover sole	0.0100	0.0102	0.0100	0.0108	0.0107	0.0105	0.0107	0.0111	0.0111	0.0111	0.0108	0.0106
dusky rockfish	0.0236	0.0241	0.0236	0.0243	0.0241	0.0235	0.0242	0.0258	0.0264	0.0267	0.0263	0.0260
flathead sole	0.0172	0.0178	0.0182	0.0186	0.0186	0.0182	0.0181	0.0189	0.0190	0.0195	0.0197	0.0193
great sculpin	0.0116	0.0119	0.0122	0.0122	0.0123	0.0122	0.0122	0.0127	0.0126	0.0131	0.0135	0.0131
greenstriped rockfish	0.0152	0.0155	0.0157	0.0165	0.0165	0.0162	0.0164	0.0172	0.0174	0.0177	0.0179	0.0175
harlequin rockfish	0.0063	0.0061	0.0059	0.0059	0.0059	0.0059	0.0065	0.0064	0.0064	0.0062	0.0060	0.0058
longspine thornyhead	0.0098	0.0102	0.0101	0.0106	0.0105	0.0103	0.0106	0.0110	0.0109	0.0108	0.0106	0.0102
northern rock sole	0.0105	0.0108	0.0108	0.0107	0.0109	0.0107	0.0106	0.0107	0.0104	0.0107	0.0106	0.0103
northern rockfish	0.0148	0.0151	0.0147	0.0150	0.0148	0.0144	0.0156	0.0160	0.0158	0.0158	0.0155	0.0150
octopus	0.0152	0.0155	0.0157	0.0163	0.0164	0.0161	0.0165	0.0171	0.0170	0.0176	0.0177	0.0173
pacific cod	0.0193	0.0196	0.0198	0.0203	0.0203	0.0200	0.0199	0.0205	0.0205	0.0212	0.0214	0.0210
pacific ocean perch	0.0147	0.0151	0.0148	0.0157	0.0156	0.0152	0.0156	0.0167	0.0169	0.0171	0.0169	0.0166
pygmy rockfish	0.0144	0.0148	0.0149	0.0157	0.0157	0.0154	0.0155	0.0164	0.0166	0.0170	0.0172	0.0169
quillback rockfish	0.0146	0.0148	0.0150	0.0152	0.0154	0.0151	0.0150	0.0155	0.0158	0.0162	0.0164	0.0162
redbanded rockfish	0.0139	0.0143	0.0144	0.0152	0.0151	0.0148	0.0151	0.0158	0.0159	0.0161	0.0162	0.0159
redstriped rockfish	0.0156	0.0161	0.0162	0.0170	0.0169	0.0166	0.0169	0.0177	0.0179	0.0182	0.0183	0.0179
rex sole	0.0136	0.0141	0.0140	0.0149	0.0147	0.0143	0.0146	0.0154	0.0156	0.0158	0.0157	0.0154
rosethorn rockfish	0.0140	0.0144	0.0146	0.0153	0.0154	0.0150	0.0154	0.0160	0.0161	0.0163	0.0165	0.0161
rougeye rockfish	0.0124	0.0128	0.0128	0.0135	0.0133	0.0130	0.0133	0.0140	0.0141	0.0141	0.0140	0.0137
sablefish	0.0126	0.0130	0.0128	0.0138	0.0137	0.0134	0.0136	0.0142	0.0143	0.0144	0.0140	0.0138
sharpchin rockfish	0.0147	0.0151	0.0152	0.0159	0.0158	0.0154	0.0157	0.0165	0.0167	0.0169	0.0170	0.0166
shortraker rockfish	0.0069	0.0069	0.0067	0.0068	0.0070	0.0070	0.0081	0.0081	0.0079	0.0079	0.0077	0.0074
shortspine thornyhead	0.0070	0.0070	0.0068	0.0068	0.0071	0.0070	0.0076	0.0077	0.0076	0.0075	0.0073	0.0071
silvergray rockfish	0.0015	0.0015	0.0014	0.0015	0.0014	0.0014	0.0015	0.0015	0.0015	0.0015	0.0015	0.0014
southern rock sole	0.0134	0.0135	0.0136	0.0137	0.0140	0.0139	0.0139	0.0140	0.0139	0.0147	0.0148	0.0144
walleye pollock	0.0157	0.0162	0.0163	0.0171	0.0170	0.0165	0.0166	0.0174	0.0174	0.0177	0.0178	0.0174
yellow irish lord	0.0191	0.0193	0.0201	0.0202	0.0207	0.0206	0.0205	0.0209	0.0204	0.0210	0.0215	0.0209
yelloweye rockfish	0.0150	0.0154	0.0155	0.0162	0.0162	0.0158	0.0160	0.0169	0.0171	0.0174	0.0176	0.0172
yellowfin sole	0.0073	0.0074	0.0075	0.0074	0.0072	0.0070	0.0068	0.0070	0.0068	0.0072	0.0075	0.0073

species	Jan-10	Feb-10	Mar-10	Apr-10	May-10	Jun-10	Jul-10	Aug-10	Sep-10	Oct-10	Nov-10	Dec-10
alaska plaice	0.0043	0.0046	0.0046	0.0045	0.0043	0.0042	0.0040	0.0040	0.0041	0.0044	0.0044	0.0043
alaska skate	0.0170	0.0173	0.0174	0.0185	0.0186	0.0180	0.0181	0.0179	0.0180	0.0184	0.0184	0.0179
aleutian skate	0.0143	0.0148	0.0148	0.0163	0.0164	0.0158	0.0159	0.0157	0.0155	0.0159	0.0158	0.0154
arrowtooth flounder	0.0174	0.0180	0.0181	0.0196	0.0197	0.0191	0.0190	0.0187	0.0186	0.0190	0.0188	0.0184
atka mackerel	0.0150	0.0153	0.0151	0.0152	0.0148	0.0143	0.0149	0.0144	0.0143	0.0140	0.0140	0.0136
bering skate	0.0163	0.0167	0.0167	0.0181	0.0182	0.0176	0.0176	0.0173	0.0172	0.0176	0.0175	0.0171
bigmouth sculpin	0.0167	0.0173	0.0173	0.0187	0.0187	0.0181	0.0182	0.0178	0.0177	0.0181	0.0179	0.0175
black rockfish	0.0081	0.0081	0.0080	0.0080	0.0080	0.0078	0.0078	0.0076	0.0076	0.0080	0.0079	0.0077
blackspotted rockfish	0.0115	0.0119	0.0120	0.0134	0.0134	0.0131	0.0133	0.0131	0.0129	0.0129	0.0128	0.0124
dover sole	0.0103	0.0106	0.0106	0.0120	0.0121	0.0118	0.0119	0.0116	0.0114	0.0113	0.0110	0.0108
dusky rockfish	0.0252	0.0260	0.0258	0.0270	0.0269	0.0262	0.0265	0.0260	0.0258	0.0255	0.0254	0.0250
flathead sole	0.0189	0.0196	0.0197	0.0207	0.0209	0.0203	0.0200	0.0198	0.0198	0.0206	0.0205	0.0201
great sculpin	0.0132	0.0133	0.0133	0.0135	0.0135	0.0132	0.0130	0.0130	0.0132	0.0138	0.0139	0.0135
greenstriped rockfish	0.0171	0.0175	0.0175	0.0189	0.0191	0.0185	0.0185	0.0182	0.0182	0.0186	0.0185	0.0181
harlequin rockfish	0.0057	0.0055	0.0054	0.0054	0.0054	0.0053	0.0059	0.0058	0.0056	0.0055	0.0054	0.0052
longspine thornyhead	0.0100	0.0104	0.0105	0.0117	0.0117	0.0114	0.0117	0.0114	0.0113	0.0112	0.0111	0.0107
northern rock sole	0.0104	0.0106	0.0104	0.0102	0.0101	0.0098	0.0098	0.0096	0.0100	0.0101	0.0103	0.0100
northern rockfish	0.0147	0.0147	0.0145	0.0149	0.0146	0.0142	0.0152	0.0151	0.0149	0.0146	0.0149	0.0144
octopus	0.0170	0.0172	0.0172	0.0184	0.0184	0.0179	0.0181	0.0179	0.0179	0.0184	0.0184	0.0179
pacific cod	0.0210	0.0215	0.0213	0.0222	0.0222	0.0216	0.0215	0.0212	0.0214	0.0221	0.0219	0.0214
pacific ocean perch	0.0161	0.0164	0.0165	0.0182	0.0182	0.0177	0.0180	0.0176	0.0174	0.0173	0.0172	0.0168
pygmy rockfish	0.0165	0.0169	0.0169	0.0182	0.0183	0.0178	0.0175	0.0173	0.0173	0.0177	0.0176	0.0173
quillback rockfish	0.0161	0.0165	0.0164	0.0168	0.0169	0.0164	0.0161	0.0160	0.0161	0.0166	0.0165	0.0162
redbanded rockfish	0.0154	0.0159	0.0160	0.0175	0.0177	0.0172	0.0172	0.0169	0.0168	0.0171	0.0170	0.0166
redstriped rockfish	0.0175	0.0178	0.0179	0.0194	0.0196	0.0190	0.0190	0.0188	0.0187	0.0190	0.0189	0.0185
rex sole	0.0150	0.0155	0.0156	0.0172	0.0174	0.0168	0.0169	0.0166	0.0164	0.0165	0.0164	0.0160
rosethorn rockfish	0.0157	0.0160	0.0161	0.0175	0.0177	0.0172	0.0173	0.0171	0.0170	0.0173	0.0173	0.0169
rougeye rockfish	0.0133	0.0137	0.0139	0.0154	0.0155	0.0151	0.0152	0.0149	0.0147	0.0149	0.0148	0.0144
sablefish	0.0134	0.0139	0.0140	0.0156	0.0159	0.0154	0.0155	0.0151	0.0148	0.0147	0.0144	0.0141
sharpchin rockfish	0.0161	0.0166	0.0167	0.0182	0.0184	0.0178	0.0179	0.0176	0.0175	0.0178	0.0177	0.0173
shortraker rockfish	0.0072	0.0070	0.0069	0.0070	0.0073	0.0072	0.0080	0.0078	0.0076	0.0074	0.0072	0.0069
shortspine thornyhead	0.0068	0.0066	0.0065	0.0067	0.0070	0.0069	0.0075	0.0073	0.0071	0.0069	0.0067	0.0065
silvergray rockfish	0.0014	0.0013	0.0013	0.0014	0.0014	0.0014	0.0016	0.0016	0.0015	0.0015	0.0015	0.0014
southern rock sole	0.0148	0.0149	0.0147	0.0145	0.0144	0.0140	0.0140	0.0138	0.0142	0.0148	0.0146	0.0142
walleye pollock	0.0170	0.0176	0.0177	0.0193	0.0195	0.0189	0.0188	0.0184	0.0183	0.0188	0.0186	0.0182
yellow irish lord	0.0207	0.0211	0.0208	0.0205	0.0203	0.0197	0.0194	0.0193	0.0204	0.0218	0.0216	0.0210
yelloweye rockfish	0.0168	0.0172	0.0172	0.0185	0.0186	0.0180	0.0180	0.0177	0.0177	0.0182	0.0182	0.0178
yellowfin sole	0.0073	0.0076	0.0076	0.0075	0.0073	0.0070	0.0069	0.0068	0.0071	0.0077	0.0076	0.0074

species	Jan-11	Feb-11	Mar-11	Apr-11	May-11	Jun-11	Jul-11	Aug-11	Sep-11	Oct-11	Nov-11	Dec-11
alaska plaice	0.0042	0.0043	0.0044	0.0042	0.0041	0.0040	0.0038	0.0038	0.0038	0.0042	0.0041	0.0040
alaska skate	0.0175	0.0172	0.0173	0.0181	0.0183	0.0179	0.0179	0.0182	0.0182	0.0184	0.0180	0.0174
aleutian skate	0.0149	0.0147	0.0148	0.0158	0.0155	0.0151	0.0152	0.0150	0.0150	0.0153	0.0150	0.0145
arrowtooth flounder	0.0179	0.0177	0.0179	0.0188	0.0187	0.0183	0.0183	0.0183	0.0184	0.0187	0.0184	0.0178
atka mackerel	0.0136	0.0135	0.0134	0.0134	0.0130	0.0127	0.0132	0.0128	0.0124	0.0129	0.0125	0.0121
bering skate	0.0165	0.0163	0.0164	0.0174	0.0174	0.0170	0.0171	0.0172	0.0171	0.0173	0.0170	0.0164
bigmouth sculpin	0.0169	0.0167	0.0169	0.0177	0.0176	0.0173	0.0174	0.0174	0.0174	0.0177	0.0173	0.0168
black rockfish	0.0078	0.0077	0.0075	0.0076	0.0076	0.0074	0.0074	0.0075	0.0075	0.0081	0.0080	0.0077
blackspotted rockfish	0.0120	0.0120	0.0121	0.0130	0.0128	0.0125	0.0129	0.0127	0.0126	0.0127	0.0124	0.0120
dover sole	0.0105	0.0103	0.0102	0.0111	0.0110	0.0108	0.0111	0.0110	0.0109	0.0110	0.0107	0.0104
dusky rockfish	0.0241	0.0237	0.0240	0.0245	0.0244	0.0239	0.0245	0.0242	0.0243	0.0244	0.0236	0.0229
flathead sole	0.0195	0.0193	0.0196	0.0205	0.0206	0.0202	0.0200	0.0203	0.0203	0.0209	0.0205	0.0199
great sculpin	0.0134	0.0132	0.0133	0.0136	0.0137	0.0133	0.0132	0.0134	0.0133	0.0139	0.0137	0.0132
greenstriped rockfish	0.0175	0.0173	0.0174	0.0185	0.0186	0.0182	0.0182	0.0185	0.0184	0.0186	0.0183	0.0177
harlequin rockfish	0.0050	0.0049	0.0047	0.0046	0.0047	0.0047	0.0053	0.0051	0.0050	0.0049	0.0047	0.0046
longspine thornyhead	0.0104	0.0103	0.0105	0.0112	0.0110	0.0108	0.0111	0.0109	0.0108	0.0109	0.0107	0.0103
northern rock sole	0.0101	0.0100	0.0101	0.0100	0.0100	0.0098	0.0098	0.0098	0.0098	0.0103	0.0101	0.0098
northern rockfish	0.0140	0.0137	0.0134	0.0134	0.0131	0.0129	0.0141	0.0138	0.0135	0.0138	0.0134	0.0130
octopus	0.0174	0.0171	0.0172	0.0180	0.0182	0.0178	0.0181	0.0183	0.0182	0.0185	0.0181	0.0175
pacific cod	0.0212	0.0208	0.0210	0.0215	0.0217	0.0212	0.0211	0.0213	0.0213	0.0221	0.0217	0.0210
pacific ocean perch	0.0162	0.0159	0.0160	0.0171	0.0169	0.0166	0.0169	0.0168	0.0168	0.0168	0.0164	0.0158
pygmy rockfish	0.0167	0.0165	0.0167	0.0177	0.0178	0.0175	0.0173	0.0175	0.0175	0.0176	0.0173	0.0167
quillback rockfish	0.0160	0.0159	0.0160	0.0164	0.0167	0.0163	0.0161	0.0163	0.0164	0.0167	0.0164	0.0159
redbanded rockfish	0.0160	0.0159	0.0160	0.0170	0.0170	0.0166	0.0168	0.0168	0.0167	0.0169	0.0166	0.0160
redstriped rockfish	0.0179	0.0176	0.0177	0.0188	0.0188	0.0185	0.0186	0.0187	0.0187	0.0188	0.0184	0.0178
rex sole	0.0155	0.0153	0.0155	0.0165	0.0163	0.0160	0.0162	0.0160	0.0160	0.0162	0.0159	0.0154
rosethorn rockfish	0.0164	0.0162	0.0163	0.0173	0.0175	0.0171	0.0173	0.0176	0.0174	0.0175	0.0172	0.0166
rougeye rockfish	0.0139	0.0138	0.0139	0.0149	0.0147	0.0144	0.0147	0.0145	0.0144	0.0146	0.0143	0.0138
sablefish	0.0136	0.0135	0.0134	0.0145	0.0144	0.0141	0.0144	0.0143	0.0143	0.0143	0.0140	0.0135
sharpchin rockfish	0.0167	0.0165	0.0167	0.0176	0.0175	0.0171	0.0173	0.0172	0.0172	0.0175	0.0171	0.0165
shortraker rockfish	0.0067	0.0065	0.0064	0.0065	0.0065	0.0066	0.0077	0.0075	0.0073	0.0071	0.0068	0.0066
shortspine thornyhead	0.0063	0.0061	0.0060	0.0065	0.0067	0.0067	0.0075	0.0073	0.0073	0.0071	0.0069	0.0066
silvergray rockfish	0.0014	0.0014	0.0013	0.0014	0.0015	0.0015	0.0017	0.0017	0.0016	0.0016	0.0015	0.0015
southern rock sole	0.0144	0.0141	0.0140	0.0140	0.0144	0.0141	0.0139	0.0142	0.0143	0.0151	0.0147	0.0143
walleye pollock	0.0176	0.0174	0.0177	0.0188	0.0187	0.0183	0.0183	0.0184	0.0184	0.0188	0.0184	0.0178
yellow irish lord	0.0208	0.0206	0.0205	0.0209	0.0218	0.0215	0.0209	0.0220	0.0220	0.0228	0.0223	0.0217
yelloweye rockfish	0.0172	0.0169	0.0170	0.0177	0.0178	0.0175	0.0175	0.0177	0.0177	0.0180	0.0177	0.0171
yellowfin sole	0.0073	0.0073	0.0074	0.0072	0.0070	0.0068	0.0066	0.0069	0.0070	0.0075	0.0074	0.0072

species	Jan-12	Feb-12	Mar-12	Apr-12	May-12	Jun-12	Jul-12	Aug-12	Sep-12	Oct-12	Nov-12	Dec-12
alaska plaice	0.0039	0.0040	0.0039	0.0039	0.0037	0.0036	0.0035	0.0034	0.0035	0.0037	0.0036	0.0036
alaska skate	0.0170	0.0167	0.0167	0.0172	0.0173	0.0169	0.0175	0.0170	0.0166	0.0168	0.0168	0.0167
aleutian skate	0.0141	0.0139	0.0139	0.0144	0.0144	0.0141	0.0147	0.0144	0.0141	0.0142	0.0141	0.0138
arrowtooth flounder	0.0173	0.0170	0.0168	0.0174	0.0174	0.0169	0.0175	0.0171	0.0168	0.0168	0.0168	0.0166
atka mackerel	0.0120	0.0127	0.0125	0.0124	0.0134	0.0130	0.0134	0.0130	0.0127	0.0128	0.0123	0.0120
bering skate	0.0160	0.0157	0.0155	0.0161	0.0161	0.0156	0.0162	0.0158	0.0155	0.0154	0.0153	0.0152
bigmouth sculpin	0.0163	0.0160	0.0159	0.0165	0.0164	0.0160	0.0166	0.0162	0.0159	0.0159	0.0158	0.0156
black rockfish	0.0077	0.0077	0.0079	0.0080	0.0083	0.0081	0.0083	0.0080	0.0079	0.0081	0.0080	0.0079
blackspotted rockfish	0.0117	0.0115	0.0114	0.0119	0.0120	0.0118	0.0124	0.0122	0.0120	0.0120	0.0117	0.0114
dover sole	0.0100	0.0098	0.0096	0.0101	0.0100	0.0098	0.0102	0.0100	0.0097	0.0095	0.0093	0.0090
dusky rockfish	0.0222	0.0216	0.0214	0.0217	0.0218	0.0215	0.0225	0.0220	0.0214	0.0211	0.0207	0.0205
flathead sole	0.0193	0.0190	0.0190	0.0194	0.0194	0.0189	0.0194	0.0189	0.0186	0.0188	0.0188	0.0187
great sculpin	0.0131	0.0129	0.0129	0.0130	0.0137	0.0133	0.0136	0.0133	0.0131	0.0135	0.0135	0.0134
greenstriped rockfish	0.0171	0.0167	0.0165	0.0171	0.0172	0.0168	0.0173	0.0168	0.0164	0.0165	0.0164	0.0163
harlequin rockfish	0.0045	0.0043	0.0042	0.0042	0.0044	0.0045	0.0050	0.0051	0.0050	0.0049	0.0048	0.0046
longspine thornyhead	0.0100	0.0099	0.0099	0.0102	0.0103	0.0101	0.0106	0.0104	0.0103	0.0103	0.0101	0.0098
northern rock sole	0.0096	0.0097	0.0097	0.0096	0.0105	0.0102	0.0103	0.0100	0.0099	0.0101	0.0099	0.0097
northern rockfish	0.0129	0.0128	0.0129	0.0131	0.0131	0.0129	0.0138	0.0136	0.0133	0.0132	0.0129	0.0125
octopus	0.0171	0.0168	0.0168	0.0172	0.0174	0.0171	0.0177	0.0173	0.0169	0.0171	0.0171	0.0168
pacific cod	0.0206	0.0204	0.0204	0.0208	0.0211	0.0205	0.0212	0.0207	0.0203	0.0205	0.0205	0.0202
pacific ocean perch	0.0154	0.0150	0.0148	0.0154	0.0155	0.0152	0.0159	0.0156	0.0152	0.0151	0.0149	0.0146
pygmy rockfish	0.0162	0.0159	0.0158	0.0163	0.0164	0.0159	0.0164	0.0160	0.0156	0.0156	0.0157	0.0156
quillback rockfish	0.0155	0.0152	0.0153	0.0154	0.0155	0.0151	0.0153	0.0149	0.0146	0.0148	0.0149	0.0148
redbanded rockfish	0.0155	0.0152	0.0149	0.0156	0.0157	0.0153	0.0159	0.0155	0.0152	0.0151	0.0150	0.0148
redstriped rockfish	0.0173	0.0169	0.0168	0.0174	0.0175	0.0171	0.0177	0.0172	0.0168	0.0168	0.0168	0.0166
rex sole	0.0149	0.0146	0.0143	0.0150	0.0150	0.0146	0.0151	0.0148	0.0144	0.0144	0.0142	0.0140
rosethorn rockfish	0.0161	0.0158	0.0155	0.0161	0.0163	0.0159	0.0165	0.0161	0.0157	0.0158	0.0158	0.0156
rougeye rockfish	0.0134	0.0131	0.0130	0.0135	0.0136	0.0133	0.0139	0.0136	0.0134	0.0133	0.0131	0.0129
sablefish	0.0131	0.0128	0.0126	0.0133	0.0132	0.0129	0.0133	0.0130	0.0127	0.0125	0.0122	0.0120
sharpchin rockfish	0.0161	0.0158	0.0156	0.0162	0.0163	0.0159	0.0165	0.0161	0.0158	0.0157	0.0156	0.0155
shortraker rockfish	0.0064	0.0062	0.0060	0.0060	0.0060	0.0062	0.0068	0.0067	0.0066	0.0064	0.0063	0.0061
shortspine thornyhead	0.0064	0.0062	0.0061	0.0061	0.0062	0.0063	0.0068	0.0067	0.0066	0.0064	0.0062	0.0060
silvergray rockfish	0.0014	0.0014	0.0014	0.0014	0.0016	0.0016	0.0019	0.0019	0.0019	0.0018	0.0018	0.0017
southern rock sole	0.0142	0.0140	0.0142	0.0142	0.0148	0.0144	0.0148	0.0144	0.0142	0.0146	0.0145	0.0143
walleye pollock	0.0173	0.0170	0.0168	0.0175	0.0174	0.0169	0.0175	0.0170	0.0167	0.0168	0.0167	0.0166
yellow irish lord	0.0212	0.0211	0.0211	0.0211	0.0209	0.0203	0.0204	0.0197	0.0195	0.0202	0.0205	0.0203
yelloweye rockfish	0.0167	0.0164	0.0163	0.0168	0.0169	0.0165	0.0172	0.0168	0.0164	0.0165	0.0164	0.0163
yellowfin sole	0.0071	0.0071	0.0070	0.0069	0.0067	0.0065	0.0064	0.0062	0.0065	0.0067	0.0068	0.0067

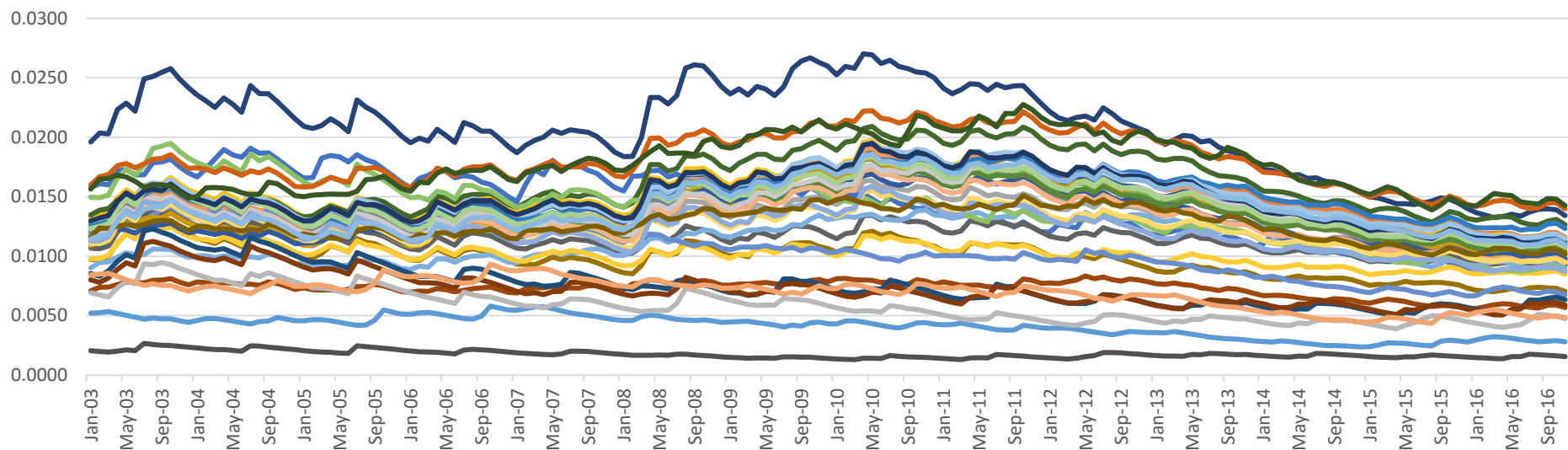
species	Jan-13	Feb-13	Mar-13	Apr-13	May-13	Jun-13	Jul-13	Aug-13	Sep-13	Oct-13	Nov-13	Dec-13
alaska plaice	0.0036	0.0036	0.0037	0.0035	0.0034	0.0033	0.0032	0.0031	0.0031	0.0030	0.0030	0.0029
alaska skate	0.0162	0.0161	0.0163	0.0164	0.0164	0.0160	0.0158	0.0155	0.0157	0.0156	0.0156	0.0151
aleutian skate	0.0135	0.0134	0.0136	0.0139	0.0139	0.0135	0.0133	0.0129	0.0128	0.0128	0.0127	0.0124
arrowtooth flounder	0.0161	0.0159	0.0160	0.0163	0.0162	0.0157	0.0154	0.0150	0.0148	0.0148	0.0147	0.0143
atka mackerel	0.0117	0.0119	0.0121	0.0123	0.0120	0.0117	0.0118	0.0115	0.0117	0.0115	0.0112	0.0109
bering skate	0.0147	0.0145	0.0146	0.0149	0.0149	0.0145	0.0143	0.0140	0.0140	0.0139	0.0139	0.0136
bigmouth sculpin	0.0151	0.0150	0.0152	0.0154	0.0154	0.0150	0.0148	0.0144	0.0142	0.0142	0.0142	0.0138
black rockfish	0.0077	0.0076	0.0078	0.0076	0.0075	0.0073	0.0073	0.0071	0.0073	0.0072	0.0071	0.0069
blackspotted rockfish	0.0111	0.0111	0.0113	0.0116	0.0118	0.0115	0.0115	0.0112	0.0110	0.0109	0.0110	0.0107
dover sole	0.0087	0.0087	0.0087	0.0090	0.0093	0.0090	0.0090	0.0088	0.0087	0.0086	0.0087	0.0084
dusky rockfish	0.0198	0.0194	0.0198	0.0202	0.0201	0.0196	0.0197	0.0192	0.0189	0.0187	0.0184	0.0179
flathead sole	0.0182	0.0181	0.0182	0.0182	0.0180	0.0174	0.0171	0.0168	0.0167	0.0166	0.0164	0.0160
great sculpin	0.0130	0.0129	0.0131	0.0128	0.0127	0.0123	0.0121	0.0120	0.0122	0.0122	0.0120	0.0117
greenstriped rockfish	0.0158	0.0156	0.0156	0.0158	0.0159	0.0154	0.0152	0.0149	0.0149	0.0148	0.0147	0.0144
harlequin rockfish	0.0045	0.0044	0.0046	0.0045	0.0047	0.0047	0.0050	0.0049	0.0048	0.0047	0.0047	0.0046
longspine thornyhead	0.0095	0.0095	0.0097	0.0100	0.0102	0.0100	0.0099	0.0097	0.0095	0.0095	0.0097	0.0094
northern rock sole	0.0095	0.0095	0.0094	0.0093	0.0091	0.0089	0.0088	0.0087	0.0089	0.0087	0.0085	0.0082
northern rockfish	0.0122	0.0119	0.0125	0.0125	0.0125	0.0123	0.0127	0.0124	0.0123	0.0122	0.0121	0.0117
octopus	0.0164	0.0162	0.0164	0.0166	0.0167	0.0163	0.0161	0.0159	0.0160	0.0158	0.0159	0.0155
pacific cod	0.0197	0.0195	0.0197	0.0196	0.0193	0.0188	0.0185	0.0182	0.0184	0.0183	0.0181	0.0176
pacific ocean perch	0.0141	0.0139	0.0141	0.0146	0.0147	0.0143	0.0142	0.0139	0.0137	0.0136	0.0137	0.0133
pygmy rockfish	0.0151	0.0149	0.0150	0.0152	0.0152	0.0147	0.0145	0.0142	0.0143	0.0142	0.0140	0.0136
quillback rockfish	0.0144	0.0143	0.0143	0.0141	0.0140	0.0135	0.0133	0.0132	0.0134	0.0133	0.0131	0.0127
redbanded rockfish	0.0144	0.0142	0.0143	0.0146	0.0147	0.0143	0.0141	0.0138	0.0136	0.0135	0.0136	0.0133
redstriped rockfish	0.0161	0.0159	0.0161	0.0164	0.0164	0.0160	0.0157	0.0154	0.0153	0.0152	0.0152	0.0148
rex sole	0.0136	0.0134	0.0135	0.0139	0.0139	0.0135	0.0133	0.0130	0.0127	0.0126	0.0127	0.0123
rosethorn rockfish	0.0151	0.0149	0.0150	0.0152	0.0154	0.0150	0.0148	0.0146	0.0145	0.0144	0.0144	0.0141
rougeye rockfish	0.0125	0.0124	0.0125	0.0129	0.0130	0.0127	0.0126	0.0123	0.0120	0.0119	0.0120	0.0117
sablefish	0.0116	0.0115	0.0115	0.0120	0.0122	0.0119	0.0118	0.0115	0.0113	0.0112	0.0113	0.0110
sharpchin rockfish	0.0150	0.0148	0.0150	0.0153	0.0153	0.0149	0.0147	0.0143	0.0141	0.0140	0.0140	0.0137
shortraker rockfish	0.0059	0.0058	0.0056	0.0056	0.0059	0.0059	0.0062	0.0061	0.0060	0.0059	0.0061	0.0059
shortspine thornyhead	0.0059	0.0057	0.0056	0.0056	0.0061	0.0061	0.0063	0.0063	0.0062	0.0061	0.0063	0.0061
silvergray rockfish	0.0016	0.0016	0.0016	0.0016	0.0017	0.0017	0.0018	0.0018	0.0018	0.0017	0.0017	0.0017
southern rock sole	0.0139	0.0138	0.0139	0.0137	0.0135	0.0132	0.0130	0.0129	0.0134	0.0133	0.0130	0.0126
walleye pollock	0.0161	0.0159	0.0160	0.0163	0.0162	0.0157	0.0153	0.0150	0.0148	0.0147	0.0146	0.0142
yellow irish lord	0.0198	0.0196	0.0196	0.0192	0.0191	0.0185	0.0182	0.0185	0.0192	0.0189	0.0186	0.0180
yelloweye rockfish	0.0158	0.0156	0.0158	0.0161	0.0160	0.0156	0.0153	0.0150	0.0149	0.0148	0.0148	0.0144
yellowfin sole	0.0067	0.0066	0.0067	0.0065	0.0063	0.0061	0.0059	0.0058	0.0058	0.0057	0.0056	0.0054

species	Jan-14	Feb-14	Mar-14	Apr-14	May-14	Jun-14	Jul-14	Aug-14	Sep-14	Oct-14	Nov-14	Dec-14
alaska plaice	0.0028	0.0028	0.0029	0.0028	0.0027	0.0027	0.0026	0.0025	0.0025	0.0025	0.0024	0.0024
alaska skate	0.0147	0.0145	0.0144	0.0144	0.0143	0.0140	0.0140	0.0139	0.0140	0.0139	0.0136	0.0133
aleutian skate	0.0120	0.0118	0.0118	0.0118	0.0118	0.0116	0.0115	0.0113	0.0116	0.0116	0.0114	0.0111
arrowtooth flounder	0.0139	0.0137	0.0137	0.0137	0.0136	0.0133	0.0131	0.0130	0.0132	0.0132	0.0130	0.0127
atka mackerel	0.0110	0.0118	0.0115	0.0113	0.0113	0.0109	0.0108	0.0105	0.0104	0.0102	0.0101	0.0098
bering skate	0.0131	0.0130	0.0129	0.0129	0.0129	0.0126	0.0125	0.0124	0.0126	0.0125	0.0123	0.0120
bigmouth sculpin	0.0133	0.0133	0.0132	0.0133	0.0132	0.0129	0.0129	0.0127	0.0129	0.0129	0.0126	0.0123
black rockfish	0.0067	0.0067	0.0067	0.0066	0.0065	0.0064	0.0063	0.0062	0.0064	0.0064	0.0063	0.0062
blackspotted rockfish	0.0104	0.0103	0.0103	0.0104	0.0106	0.0103	0.0104	0.0103	0.0104	0.0103	0.0101	0.0099
dover sole	0.0082	0.0081	0.0080	0.0082	0.0083	0.0082	0.0082	0.0081	0.0082	0.0082	0.0080	0.0078
dusky rockfish	0.0173	0.0172	0.0170	0.0168	0.0169	0.0165	0.0166	0.0163	0.0162	0.0160	0.0157	0.0153
flathead sole	0.0155	0.0155	0.0154	0.0153	0.0151	0.0147	0.0145	0.0144	0.0147	0.0146	0.0144	0.0141
great sculpin	0.0113	0.0113	0.0111	0.0109	0.0107	0.0105	0.0104	0.0103	0.0104	0.0104	0.0102	0.0100
greenstriped rockfish	0.0139	0.0137	0.0136	0.0136	0.0135	0.0132	0.0132	0.0131	0.0131	0.0131	0.0129	0.0126
harlequin rockfish	0.0044	0.0043	0.0042	0.0042	0.0044	0.0043	0.0046	0.0046	0.0046	0.0046	0.0045	0.0044
longspine thornyhead	0.0091	0.0090	0.0091	0.0092	0.0093	0.0091	0.0091	0.0090	0.0091	0.0091	0.0089	0.0087
northern rock sole	0.0082	0.0083	0.0082	0.0079	0.0079	0.0077	0.0076	0.0075	0.0074	0.0074	0.0072	0.0070
northern rockfish	0.0113	0.0111	0.0110	0.0109	0.0109	0.0106	0.0107	0.0106	0.0105	0.0104	0.0103	0.0100
octopus	0.0150	0.0148	0.0147	0.0145	0.0146	0.0143	0.0143	0.0143	0.0144	0.0143	0.0140	0.0137
pacific cod	0.0171	0.0170	0.0170	0.0168	0.0166	0.0162	0.0160	0.0159	0.0161	0.0160	0.0157	0.0153
pacific ocean perch	0.0129	0.0127	0.0125	0.0125	0.0126	0.0124	0.0124	0.0122	0.0122	0.0121	0.0118	0.0115
pygmy rockfish	0.0132	0.0130	0.0129	0.0128	0.0127	0.0125	0.0124	0.0122	0.0123	0.0122	0.0120	0.0118
quillback rockfish	0.0123	0.0123	0.0122	0.0120	0.0117	0.0115	0.0114	0.0113	0.0115	0.0115	0.0113	0.0111
redbanded rockfish	0.0128	0.0126	0.0125	0.0126	0.0127	0.0124	0.0123	0.0122	0.0123	0.0122	0.0120	0.0117
redstriped rockfish	0.0143	0.0141	0.0140	0.0141	0.0141	0.0137	0.0137	0.0135	0.0136	0.0136	0.0134	0.0130
rex sole	0.0119	0.0118	0.0117	0.0118	0.0118	0.0115	0.0115	0.0114	0.0115	0.0115	0.0113	0.0110
rosethorn rockfish	0.0136	0.0133	0.0132	0.0132	0.0133	0.0130	0.0130	0.0129	0.0130	0.0129	0.0126	0.0124
rougeye rockfish	0.0113	0.0111	0.0111	0.0112	0.0113	0.0111	0.0111	0.0109	0.0110	0.0110	0.0108	0.0105
sablefish	0.0106	0.0105	0.0105	0.0107	0.0108	0.0106	0.0106	0.0105	0.0105	0.0104	0.0103	0.0100
sharpchin rockfish	0.0132	0.0130	0.0129	0.0130	0.0130	0.0127	0.0127	0.0125	0.0126	0.0126	0.0123	0.0121
shortraker rockfish	0.0057	0.0055	0.0054	0.0055	0.0056	0.0056	0.0061	0.0060	0.0060	0.0059	0.0058	0.0056
shortspine thornyhead	0.0060	0.0058	0.0057	0.0057	0.0060	0.0060	0.0063	0.0062	0.0061	0.0060	0.0059	0.0057
silvergray rockfish	0.0016	0.0016	0.0015	0.0015	0.0016	0.0016	0.0018	0.0018	0.0018	0.0017	0.0017	0.0016
southern rock sole	0.0122	0.0123	0.0122	0.0119	0.0117	0.0115	0.0114	0.0113	0.0115	0.0113	0.0111	0.0108
walleye pollock	0.0138	0.0136	0.0136	0.0136	0.0135	0.0132	0.0130	0.0129	0.0131	0.0130	0.0128	0.0125
yellow irish lord	0.0177	0.0177	0.0174	0.0169	0.0164	0.0162	0.0161	0.0161	0.0162	0.0160	0.0157	0.0154
yelloweye rockfish	0.0139	0.0139	0.0138	0.0137	0.0136	0.0133	0.0132	0.0131	0.0133	0.0132	0.0130	0.0127
yellowfin sole	0.0053	0.0052	0.0053	0.0052	0.0051	0.0049	0.0048	0.0047	0.0047	0.0047	0.0045	0.0045

species	Jan-15	Feb-15	Mar-15	Apr-15	May-15	Jun-15	Jul-15	Aug-15	Sep-15	Oct-15	Nov-15	Dec-15
alaska plaice	0.0024	0.0025	0.0027	0.0027	0.0027	0.0026	0.0025	0.0025	0.0028	0.0029	0.0029	0.0028
alaska skate	0.0130	0.0130	0.0129	0.0129	0.0128	0.0126	0.0124	0.0123	0.0126	0.0128	0.0126	0.0122
aleutian skate	0.0108	0.0110	0.0109	0.0109	0.0108	0.0107	0.0105	0.0105	0.0108	0.0111	0.0109	0.0105
arrowtooth flounder	0.0123	0.0125	0.0124	0.0124	0.0123	0.0120	0.0118	0.0118	0.0121	0.0125	0.0123	0.0119
atka mackerel	0.0096	0.0103	0.0105	0.0102	0.0100	0.0097	0.0097	0.0098	0.0097	0.0094	0.0091	0.0089
bering skate	0.0117	0.0118	0.0117	0.0117	0.0116	0.0114	0.0113	0.0112	0.0114	0.0115	0.0113	0.0110
bigmouth sculpin	0.0120	0.0122	0.0121	0.0121	0.0120	0.0118	0.0116	0.0116	0.0119	0.0122	0.0120	0.0116
black rockfish	0.0060	0.0062	0.0064	0.0063	0.0062	0.0060	0.0059	0.0058	0.0058	0.0059	0.0058	0.0056
blackspotted rockfish	0.0095	0.0096	0.0096	0.0096	0.0097	0.0096	0.0095	0.0096	0.0098	0.0100	0.0098	0.0095
dover sole	0.0075	0.0076	0.0076	0.0077	0.0079	0.0078	0.0078	0.0078	0.0078	0.0077	0.0076	0.0073
dusky rockfish	0.0150	0.0149	0.0147	0.0144	0.0144	0.0144	0.0145	0.0147	0.0149	0.0148	0.0145	0.0140
flathead sole	0.0137	0.0140	0.0140	0.0140	0.0137	0.0134	0.0131	0.0128	0.0133	0.0138	0.0136	0.0132
great sculpin	0.0098	0.0098	0.0100	0.0098	0.0097	0.0094	0.0092	0.0091	0.0094	0.0098	0.0096	0.0093
greenstriped rockfish	0.0123	0.0123	0.0122	0.0122	0.0121	0.0119	0.0118	0.0116	0.0118	0.0120	0.0118	0.0114
harlequin rockfish	0.0043	0.0041	0.0040	0.0039	0.0042	0.0044	0.0047	0.0050	0.0050	0.0048	0.0047	0.0045
longspine thornyhead	0.0084	0.0085	0.0086	0.0086	0.0088	0.0087	0.0086	0.0087	0.0089	0.0091	0.0089	0.0086
northern rock sole	0.0069	0.0072	0.0074	0.0073	0.0072	0.0070	0.0069	0.0067	0.0069	0.0070	0.0068	0.0067
northern rockfish	0.0098	0.0098	0.0097	0.0095	0.0095	0.0094	0.0095	0.0099	0.0099	0.0098	0.0095	0.0093
octopus	0.0133	0.0133	0.0132	0.0131	0.0131	0.0129	0.0127	0.0127	0.0130	0.0133	0.0130	0.0127
pacific cod	0.0150	0.0153	0.0155	0.0154	0.0152	0.0148	0.0145	0.0143	0.0147	0.0150	0.0148	0.0143
pacific ocean perch	0.0112	0.0111	0.0108	0.0107	0.0107	0.0106	0.0105	0.0106	0.0108	0.0110	0.0108	0.0104
pygmy rockfish	0.0115	0.0116	0.0116	0.0115	0.0114	0.0111	0.0109	0.0107	0.0108	0.0110	0.0108	0.0105
quillback rockfish	0.0109	0.0111	0.0113	0.0112	0.0110	0.0107	0.0105	0.0103	0.0105	0.0107	0.0106	0.0103
redbanded rockfish	0.0114	0.0114	0.0113	0.0113	0.0114	0.0112	0.0111	0.0110	0.0112	0.0114	0.0113	0.0109
redstriped rockfish	0.0127	0.0128	0.0127	0.0127	0.0126	0.0124	0.0123	0.0122	0.0125	0.0127	0.0125	0.0121
rex sole	0.0107	0.0107	0.0105	0.0106	0.0106	0.0104	0.0103	0.0103	0.0105	0.0106	0.0105	0.0101
rosethorn rockfish	0.0120	0.0120	0.0119	0.0119	0.0119	0.0117	0.0116	0.0116	0.0118	0.0121	0.0119	0.0115
rougeye rockfish	0.0102	0.0102	0.0101	0.0101	0.0103	0.0101	0.0100	0.0100	0.0102	0.0104	0.0103	0.0099
sablefish	0.0097	0.0097	0.0096	0.0097	0.0099	0.0097	0.0097	0.0097	0.0097	0.0097	0.0095	0.0092
sharpchin rockfish	0.0117	0.0117	0.0117	0.0117	0.0117	0.0115	0.0114	0.0114	0.0116	0.0119	0.0117	0.0113
shortraker rockfish	0.0054	0.0052	0.0051	0.0050	0.0053	0.0052	0.0056	0.0059	0.0060	0.0059	0.0058	0.0057
shortspine thornyhead	0.0056	0.0054	0.0052	0.0051	0.0055	0.0055	0.0057	0.0059	0.0059	0.0058	0.0057	0.0055
silvergray rockfish	0.0016	0.0015	0.0015	0.0015	0.0015	0.0015	0.0016	0.0017	0.0017	0.0016	0.0016	0.0015
southern rock sole	0.0106	0.0108	0.0111	0.0109	0.0107	0.0104	0.0102	0.0101	0.0104	0.0107	0.0105	0.0102
walleye pollock	0.0121	0.0122	0.0122	0.0122	0.0121	0.0118	0.0116	0.0115	0.0119	0.0123	0.0121	0.0117
yellow irish lord	0.0152	0.0155	0.0158	0.0156	0.0151	0.0146	0.0143	0.0139	0.0143	0.0149	0.0146	0.0143
yelloweye rockfish	0.0124	0.0125	0.0123	0.0122	0.0121	0.0119	0.0117	0.0116	0.0118	0.0121	0.0119	0.0116
yellowfin sole	0.0045	0.0046	0.0049	0.0048	0.0047	0.0046	0.0045	0.0044	0.0050	0.0053	0.0052	0.0050

species	Jan-16	Feb-16	Mar-16	Apr-16	May-16	Jun-16	Jul-16	Aug-16	Sep-16	Oct-16	Nov-16	AVERAGE	
alaska plaice	0.0030	0.0031	0.0032	0.0032	0.0031	0.0030	0.0029	0.0028	0.0029	0.0029	0.0028	0.3	0.4
alaska skate	0.0120	0.0119	0.0119	0.0119	0.0119	0.0116	0.0116	0.0117	0.0120	0.0120	0.0116	1.2	1.5
aleutian skate	0.0104	0.0103	0.0103	0.0104	0.0104	0.0101	0.0101	0.0101	0.0104	0.0105	0.0102	1.0	1.3
arrowtooth flounder	0.0117	0.0117	0.0117	0.0118	0.0118	0.0115	0.0114	0.0114	0.0116	0.0118	0.0114	1.1	1.5
atka mackerel	0.0088	0.0100	0.0103	0.0105	0.0103	0.0100	0.0098	0.0096	0.0098	0.0096	0.0093	0.9	1.4
bering skate	0.0107	0.0107	0.0106	0.0107	0.0107	0.0104	0.0105	0.0106	0.0107	0.0108	0.0104	1.0	1.4
bigmouth sculpin	0.0114	0.0114	0.0114	0.0115	0.0115	0.0112	0.0113	0.0113	0.0116	0.0117	0.0113	1.1	1.5
black rockfish	0.0056	0.0058	0.0059	0.0060	0.0060	0.0058	0.0057	0.0057	0.0059	0.0059	0.0057	0.6	0.7
blackspotted rockfish	0.0093	0.0093	0.0093	0.0094	0.0095	0.0093	0.0094	0.0094	0.0095	0.0096	0.0093	0.9	1.1
dover sole	0.0071	0.0071	0.0070	0.0071	0.0073	0.0072	0.0073	0.0074	0.0073	0.0073	0.0070	0.7	1.0
dusky rockfish	0.0137	0.0135	0.0132	0.0133	0.0135	0.0134	0.0137	0.0140	0.0140	0.0139	0.0134	1.3	2.1
flathead sole	0.0130	0.0132	0.0133	0.0134	0.0133	0.0129	0.0127	0.0126	0.0129	0.0131	0.0127	1.3	1.6
great sculpin	0.0092	0.0093	0.0095	0.0095	0.0094	0.0091	0.0090	0.0090	0.0093	0.0093	0.0090	0.9	1.1
greenstriped rockfish	0.0112	0.0110	0.0110	0.0111	0.0111	0.0108	0.0109	0.0110	0.0111	0.0111	0.0107	1.1	1.5
harlequin rockfish	0.0044	0.0042	0.0041	0.0040	0.0041	0.0042	0.0047	0.0051	0.0051	0.0049	0.0048	0.5	0.6
longspine thornyhead	0.0085	0.0086	0.0086	0.0087	0.0087	0.0085	0.0086	0.0086	0.0087	0.0088	0.0085	0.8	1.0
northern rock sole	0.0067	0.0070	0.0073	0.0074	0.0073	0.0071	0.0070	0.0069	0.0071	0.0070	0.0067	0.7	1.0
northern rockfish	0.0090	0.0090	0.0088	0.0089	0.0088	0.0087	0.0088	0.0089	0.0091	0.0091	0.0088	0.9	1.4
octopus	0.0124	0.0124	0.0124	0.0124	0.0124	0.0122	0.0123	0.0123	0.0127	0.0128	0.0123	1.2	1.5
pacific cod	0.0142	0.0144	0.0146	0.0147	0.0146	0.0142	0.0140	0.0141	0.0145	0.0145	0.0140	1.4	1.8
pacific ocean perch	0.0102	0.0099	0.0097	0.0098	0.0099	0.0097	0.0099	0.0100	0.0101	0.0102	0.0098	1.0	1.4
pygmy rockfish	0.0102	0.0101	0.0101	0.0102	0.0102	0.0099	0.0099	0.0100	0.0101	0.0100	0.0097	1.0	1.4
quillback rockfish	0.0101	0.0101	0.0103	0.0103	0.0102	0.0099	0.0099	0.0100	0.0101	0.0101	0.0097	1.0	1.3
redbanded rockfish	0.0107	0.0105	0.0104	0.0105	0.0106	0.0104	0.0104	0.0105	0.0106	0.0107	0.0103	1.0	1.4
redstriped rockfish	0.0119	0.0118	0.0117	0.0117	0.0118	0.0115	0.0116	0.0116	0.0118	0.0119	0.0115	1.1	1.5
rex sole	0.0099	0.0098	0.0097	0.0099	0.0098	0.0096	0.0096	0.0096	0.0098	0.0099	0.0095	1.0	1.3
rosethorn rockfish	0.0113	0.0111	0.0110	0.0110	0.0111	0.0109	0.0110	0.0110	0.0112	0.0113	0.0109	1.1	1.4
rougeye rockfish	0.0097	0.0096	0.0095	0.0097	0.0097	0.0095	0.0096	0.0095	0.0097	0.0098	0.0095	0.9	1.2
sablefish	0.0089	0.0088	0.0087	0.0089	0.0090	0.0089	0.0090	0.0091	0.0090	0.0090	0.0087	0.9	1.2
sharpchin rockfish	0.0111	0.0110	0.0109	0.0110	0.0110	0.0108	0.0108	0.0109	0.0111	0.0112	0.0108	1.1	1.4
shortraker rockfish	0.0055	0.0054	0.0052	0.0052	0.0055	0.0056	0.0063	0.0063	0.0064	0.0066	0.0063	0.6	0.8
shortspine thornyhead	0.0054	0.0052	0.0051	0.0051	0.0055	0.0056	0.0061	0.0060	0.0061	0.0061	0.0059	0.6	0.7
silvergray rockfish	0.0015	0.0014	0.0014	0.0014	0.0015	0.0016	0.0018	0.0017	0.0017	0.0016	0.0016	0.2	0.2
southern rock sole	0.0101	0.0104	0.0107	0.0107	0.0106	0.0103	0.0102	0.0102	0.0106	0.0105	0.0102	1.0	1.3
walleye pollock	0.0115	0.0115	0.0115	0.0116	0.0115	0.0112	0.0111	0.0111	0.0113	0.0114	0.0110	1.1	1.5
yellow irish lord	0.0142	0.0147	0.0153	0.0152	0.0151	0.0146	0.0145	0.0144	0.0149	0.0148	0.0143	1.4	1.8
yelloweye rockfish	0.0113	0.0113	0.0113	0.0113	0.0112	0.0110	0.0109	0.0110	0.0113	0.0114	0.0110	1.1	1.4
yellowfin sole	0.0053	0.0054	0.0055	0.0054	0.0052	0.0050	0.0049	0.0048	0.0049	0.0050	0.0048	0.5	0.7

FE Habitat Reduction - all species - GOA



- | | | | | |
|----------------------|-----------------------|---------------------|-----------------------|---------------------|
| alaska plaice | alaska skate | aleutian skate | arrowtooth flounder | atka mackerel |
| bering skate | bigmouth sculpin | black rockfish | blackspotted rockfish | dover sole |
| dusky rockfish | flathead sole | great sculpin | greenstriped rockfish | harlequin rockfish |
| longspine thornyhead | northern rock sole | northern rockfish | octopus | pacific cod |
| pacific ocean perch | pygmy rockfish | quillback rockfish | redbanded rockfish | redstriped rockfish |
| rex sole | rosethorn rockfish | rougeye rockfish | sablefish | sharpchin rockfish |
| shortraker rockfish | shortspine thornyhead | silvergray rockfish | southern rock sole | walleye pollock |
| yellow irish lord | yelloweye rockfish | yellowfin sole | | |