

INTERNATIONAL PACIFIC



HALIBUT COMMISSION

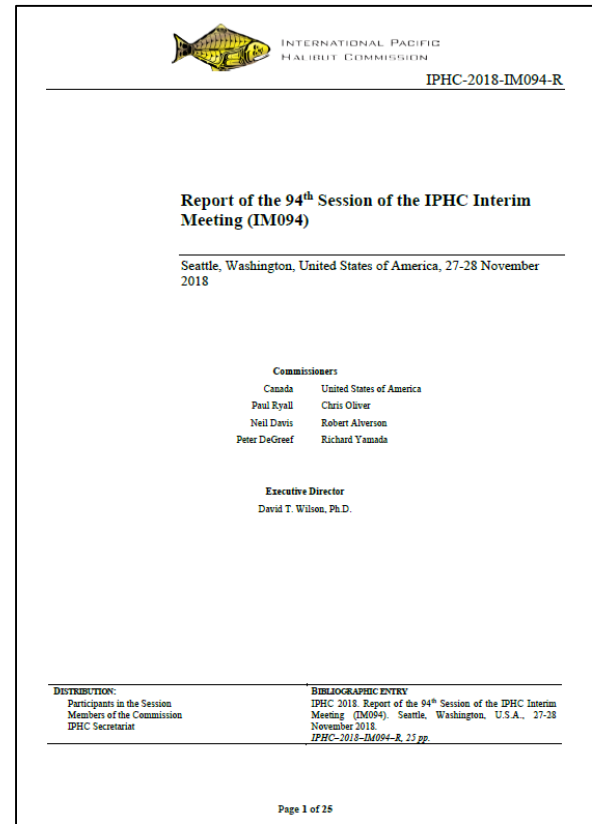
Summary of the 94th Session of the IPHC Interim Meeting (IM094)

NPFMC Meeting
Agenda Item B8
5 December 2018

94th IPHC Interim Meeting (IM094)

Information Session

- 27-28 Nov 2018, Seattle, WA, U.S.A.
- Open to the public and webcast in full
 - Meeting materials available at:
<https://iphc.int/venues/details/94th-session-of-the-iphc-interim-meeting-im094>
- Report published: 29 November 2018



94th IPHC Interim Meeting (IM094)

Information sharing forum in preparation for the 95th Annual Meeting (AM095), which will be held in Jan/Feb 2019:

- Data collection methods;
- Fishery Statistics;
- Fishery-Independent Setline Survey (FISS);
- Space-Time modelling to produce the Biological distribution;
- Stock assessment;
- Harvest decision table;
- Management Strategy Evaluation;
- Biological and Ecological Research plans;
- Regulation Proposals.

Landing Report

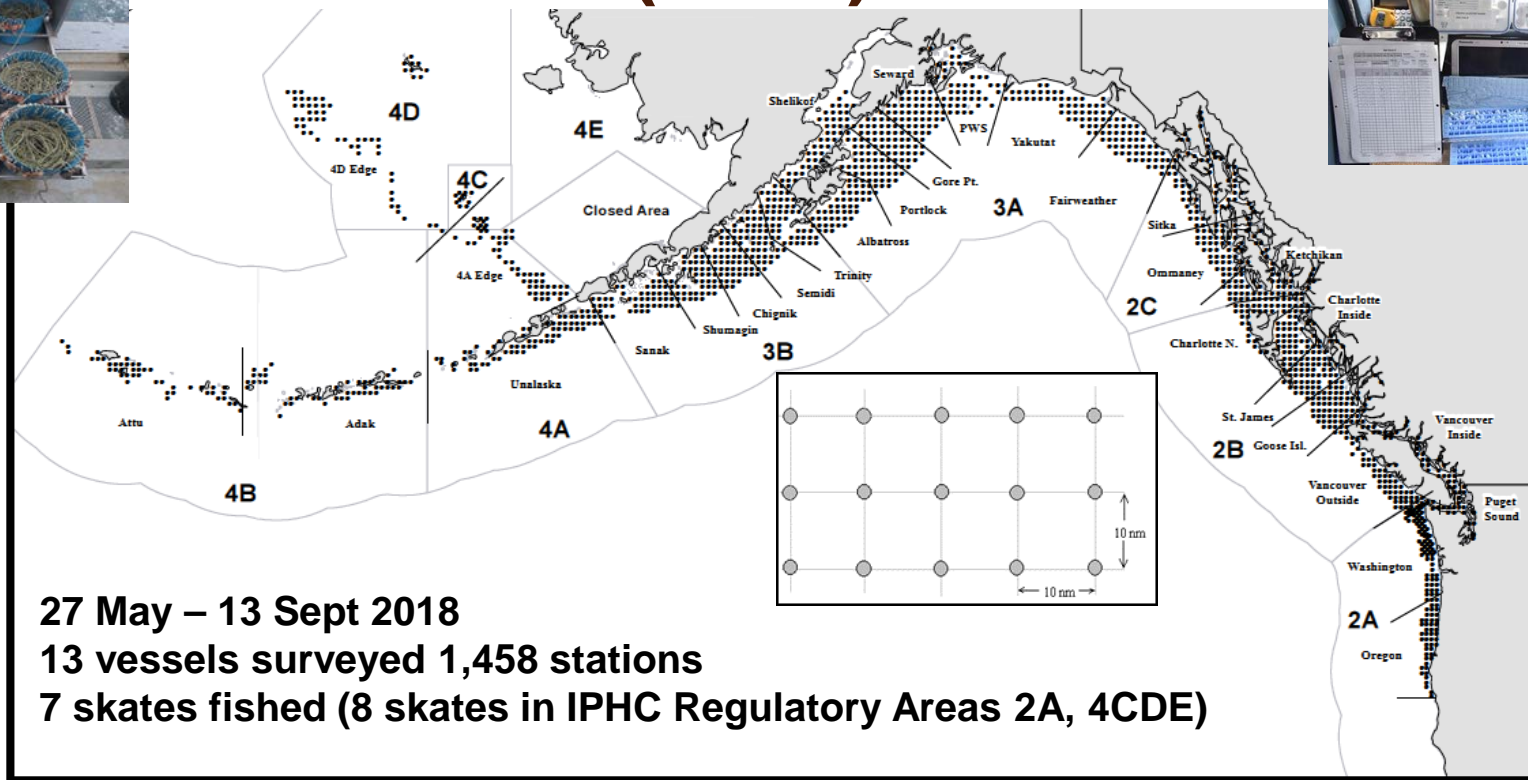
- <https://iphc.int/data/landings>



Last updated: 15 November 2018

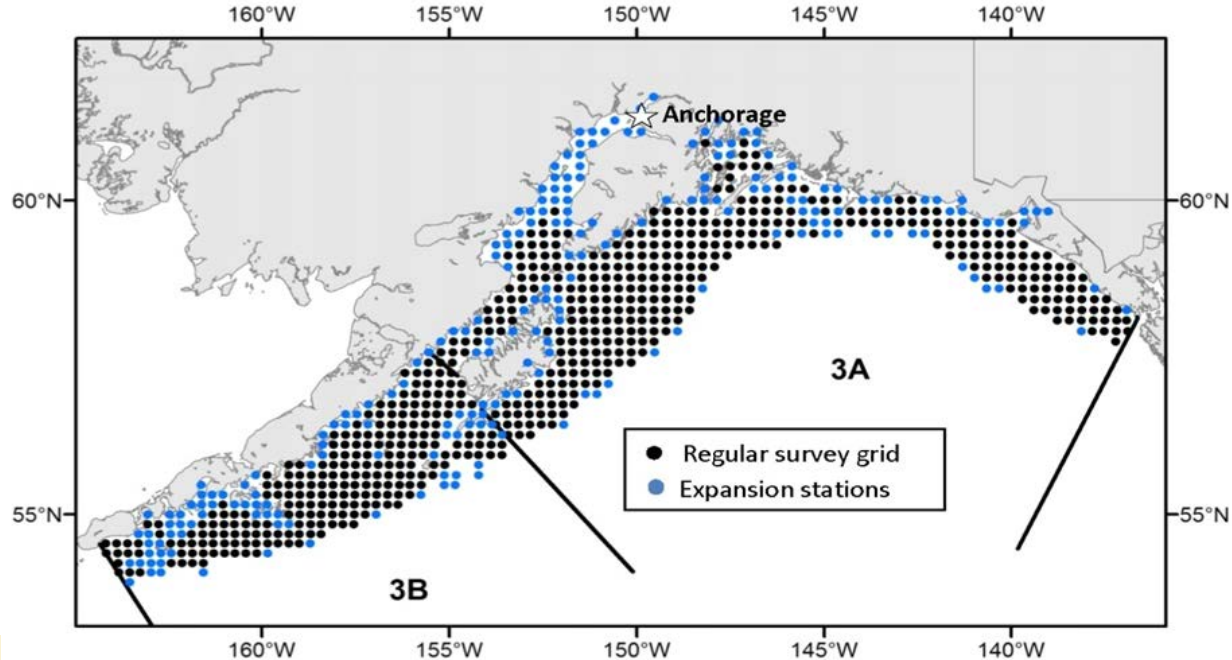
IPHC Regulatory Area	Fishery limits (net weight)		Landings (net weight)		
	Pounds (lb)	Tonnes (t)	Pounds (lb)	Tonnes (t)	Pct (%)
Area 2A (California, Oregon, and Washington)	1,190,000	539.78	1,177,742	534.21	99
Non-treaty directed commercial (south of Pt. Chehalis)	201,845	91.56	203,630	92.36	101
Non-treaty incidental catch in salmon troll fishery	35,620	16.16	34,903	15.83	98
Non-treaty incidental catch in sablefish fishery (north of Pt. Chehalis)	50,000	22.68	43,716	19.83	87
Treaty Indian commercial	389,500	176.68	403,754	183.14	104
Treaty Indian ceremonial and subsistence (year-round)	27,000	12.25	27,000	12.25	100
Recreational – Washington	225,366	102.22	222,261	100.82	99
Recreational – Oregon	229,730	104.2	211,322	95.85	92
Recreational – California	30,940	14.03	31,156	14.13	101
Area 2B (British Columbia)	6,223,985	2,823.18	6,126,703	2,779.02	98
Commercial fishery	5,295,995	2,402.25	5,324,529	2,415.16	101
Recreational fishery	927,990	420.93	802,174	363.86	86
Area 2C (southeastern Alaska)¹	4,450,000	2,018.51	4,082,784	1,851.92	92
Commercial fishery	3,570,000	1,619.32	3,414,784	1,548.92	96
Commercial discard mortality	70,000	31.75	n/a	n/a	n/a
Guided recreational fishery	810,000	367.41	668,000	303.00	82
Area 3A (central Gulf of Alaska)	9,450,000	4,286.49	9,031,027	4,096.40	96
Commercial fishery	7,350,000	3,333.91	7,181,027	3,257.26	98
Commercial discard mortality	320,000	145.15	n/a	n/a	n/a
Guided recreational fishery	1,790,000	811.94	1,850,000	839.15	103
Area 3B (western Gulf of Alaska)	2,620,000	1,188.41	2,421,127	1,098.20	92
Area 4A (eastern Aleutians)	1,370,000	621.42	1,212,814	550.12	89
Area 4B (central/western Aleutians)	1,050,000	476.24	1,036,707	470.24	99
Areas 4CDE²	1,580,000	716.68	1,410,070	639.60	89
Area 4C (Pribilof Islands)	733,500	332.71	n/a	n/a	n/a
Area 4D (northwestern Bering Sea)	733,500	332.71	n/a	n/a	n/a
Area 4E (Bering Sea flats)	113,000	51.26	n/a	n/a	n/a
Total	27,933,985	12,670.63	26,498,974	12,019.72	95

2018 Fishery-Independent Setline Survey (FISS)



Research plans

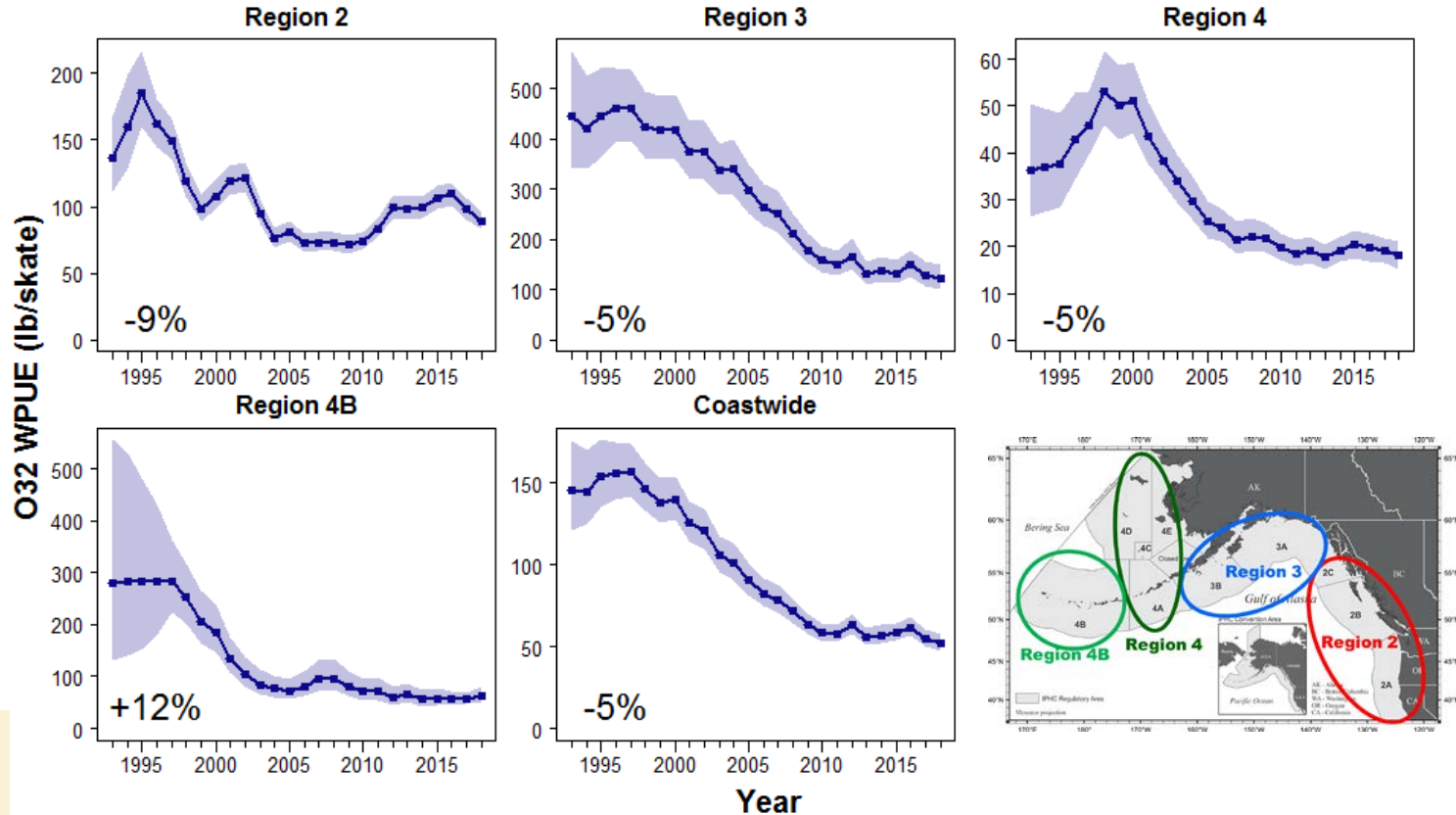
- Fishery-independent setline survey (FISS) expansion - 2019



Stock Assessment: Summary

- Fishery and modelled survey trends down coastwide
- Setline survey expansion data increased coastwide biomass estimates
- Setline survey observations of the 2011 and 2012 cohorts reduced recent fishing intensity estimates
- Spawning biomass still estimated to be decreasing and projected to decrease for TCEYs >20 Mlb, with greater uncertainty in this year's results

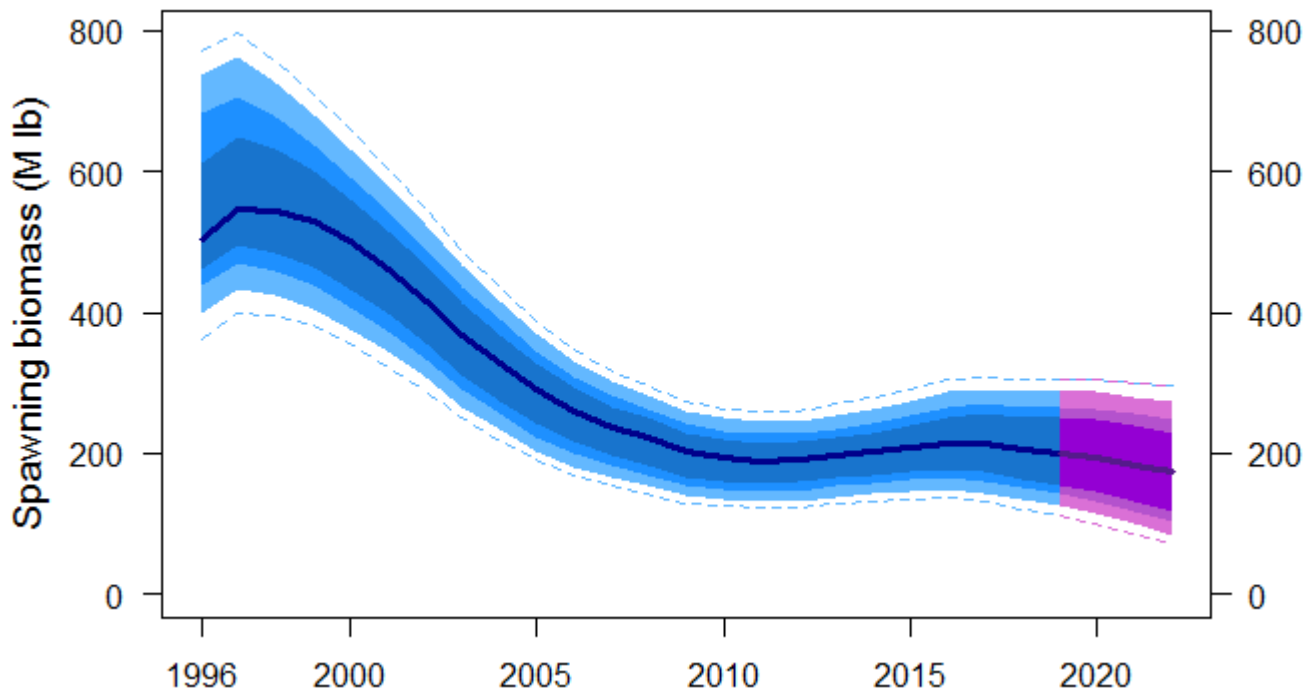
Space-Time modelled O32 WPUE by biological region



Stock assessment summary table

Indicators	Values	Trends	Status
Total mortality 2018: Retained catch 2018: Average removals 2014–18:	38.74 MLBS, 17,572 T 31.81 MLBS, 14,427 T 41.39 MLBS, 18,772 T	MORTALITY DECREASED FROM 2017 TO 2018	2018 MORTALITY NEAR 100-YEAR LOW
SPR₂₀₁₈: P(SPR<46%): P(SPR<limit):	49% (28-62%) 34% LIMIT NOT SPECIFIED	FISHING INTENSITY DECREASED FROM 2017 TO 2018	FISHING INTENSITY BELOW REFERENCE LEVEL
SB₂₀₁₉ (Mlb): SB₂₀₁₉/SB₀: P(SB₂₀₁₉<SB₃₀): P(SB₂₀₁₉<SB₂₀):	199 MLBS (125–287) 43% (27-63%) 11% <1%	SB DECREASED FROM 2017 TO 2018	NOT OVERFISHED
Biological stock distribution:	SEE TABLES AND FIGURES	DISTRIBUTION STABLE 2014-18	REGION 2 ABOVE, REGION 3 BELOW HISTORICAL VALUES

Projections – Reference ($F_{46\%}$, 40 Mlb TCEY)



Full decision table

2019 Alternative			No fishing mortality	Status quo	Reference SPR=46%													
Total mortality (M Ib)			0.0	11.7	21.8	31.8	37.6	39.0	40.4	41.8	43.1	44.3	45.5	46.8	48.3	49.9	61.8	
TCEY (M Ib)			0.0	10.0	20.0	30.0	35.8	37.2	38.6	40.0	41.3	42.5	43.7	45.0	46.5	48.1	60.0	
2019 Fishing intensity			F _{100%}	F _{78%}	F _{64%}	F _{54%}	F _{49%}	F _{48%}	F _{47%}	F _{46%}	F _{45%}	F _{44%}	F _{43%}	F _{42%}	F _{41%}	F _{40%}	F _{34%}	
Fishing intensity interval			--	56-87%	41-76%	31-67%	27-63%	26-62%	25-61%	25-60%	24-59%	23-59%	23-58%	22-57%	22-56%	21-55%	17-49%	
Stock Trend (spawning biomass)	in 2020	is less than 2019	1	3	26	60	77	81	84	87	90	92	93	95	96	97	>99	a
		is 5% less than 2019	<1	<1	1	10	26	30	34	37	39	41	43	45	48	50	78	b
	in 2021	is less than 2019	1	7	41	75	90	93	94	96	97	98	98	99	99	99	>99	c
		is 5% less than 2019	<1	1	11	42	57	61	65	69	73	77	80	83	87	90	99	d
	in 2022	is less than 2019	1	12	51	82	93	94	96	97	98	98	99	99	99	>99	>99	e
		is 5% less than 2019	<1	3	28	58	76	79	83	86	88	90	92	93	95	96	>99	f
Stock Status (Spawning biomass)	in 2020	is less than 30%	5	7	11	14	17	17	18	18	19	19	20	20	21	21	25	g
		is less than 20%	<1	<1	<1	<1	<1	<1	<1	<1	<1	<1	<1	<1	<1	<1	1	h
	in 2021	is less than 30%	3	7	13	20	24	25	25	26	27	27	27	28	29	29	33	i
		is less than 20%	<1	<1	<1	<1	1	1	1	1	2	2	2	3	3	4	10	j
	in 2022	is less than 30%	2	8	17	25	28	29	29	30	30	31	31	32	33	33	41	k
		is less than 20%	<1	<1	<1	2	4	5	6	7	8	9	10	12	13	15	24	l
Fishery Trend (TCEY)	in 2020	is less than 2019	0	<1	18	26	40	45	51	56	60	63	66	69	73	77	95	m
		is 10% less than 2019	0	<1	12	25	29	33	37	42	47	51	54	58	62	66	95	n
	in 2021	is less than 2019	0	<1	20	28	46	51	56	60	64	67	70	73	77	81	97	o
		is 10% less than 2019	0	<1	16	26	35	39	44	49	53	56	59	63	66	71	97	p
	in 2022	is less than 2019	0	<1	22	32	50	54	58	62	66	69	72	76	79	83	98	q
		is 10% less than 2019	0	<1	19	28	40	45	49	53	56	60	62	66	69	73	98	r
Fishery Status (Fishing intensity)	in 2019	is above F _{46%}	0	<1	16	25	35	40	46	50	56	59	62	65	69	72	92	s



Evening presentation

The stock status of Pacific halibut (2018), harvest decision table, and preliminary mortality projections

5 December 2018

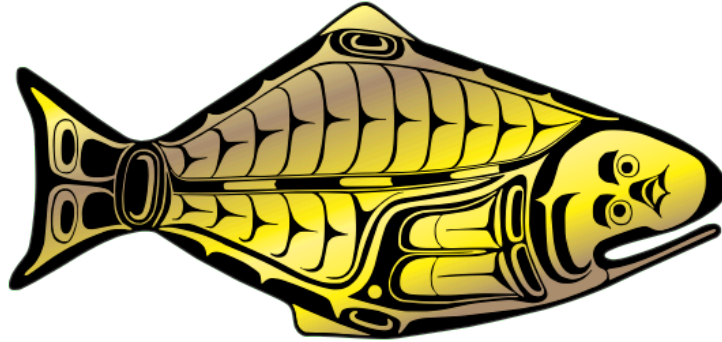
17:30-19:00

Aleutian Room

The 95th Session of the IPHC Annual Meeting (AM095)

- **Dates:** 28 January 2019 - 1 February 2019
- **Venue:** Fairmont Empress hotel (Victoria, B.C., Canada)
- **Documents:** <https://iphc.int/venues/details/95th-session-of-the-iphc-annual-meeting-am095>
- **Document deadline:** 29 December 2018

INTERNATIONAL PACIFIC



HALIBUT COMMISSION